

Cuneiform Brick Inscriptions from MI.Enlil-Arakhtum

Prof. Abbas Ali Al-Hussainy
College of Archaeology/ University of Al-Qadisiyah
Abbas.alhussainy@qu.edu.iq

Researcher: Jacob A, Jawdat,
(SBAH, Iraq)
jacobjawdat539@gmail.com

ABSTRACT

In This article we will study some Cuneiform brick inscriptions founded in the survey of Mi.Enlil Arakhtum survey which start in 2016 in in Dagharah area then we surveyed another parts of Diwanayah, the sites which we founded the sealed bricks are Tell Kozkhan, Tell Bent al-Ameer, Tell Adday, and Tell Saeed north Ad-Diwaneyah province. This inscription back to Neo-Babylonian period especially to Nebuchadnezzar II king of Babylon (605–563) B.C. It's represented a lower or upper part from different stamps.

Keywords: Nebuchadnezzar II; Mi.Enlil; Arakhtum; Neo-Babylonian; Cuneiform writing.

كتابات مسمارية على الأجر من مسح مي. إنليل - اراختوم

الباحث: يعقوب عبد الحسن جودت
الهيئة العامة للآثار والتراث
mustafaneamah8@gmail.com

أ.د. عباس علي عباس الحسيني
كلية الآثار/ جامعة القادسية
Abbas.alhussainy@qu.edu.iq

الخلاصة:

في هذا البحث سوف نقوم بدراسة بعض النصوص المسمارية المكتوبة على الأجر والتي عثر عليها ضمن مسح مي. إنليل - اراختوم الذي بدأ في عام 2016 في منطقة الدغارة ثم قمنا بمسح أجزاء أخرى من الديوانية، والمواقع التي عثرنا فيها على الأجر المختوم هي تل كوزخان ، تل بنت الأمير وتل عداي وتل سعيد شمال محافظة الديوانية. تعود الكتابات إلى العصر البابلي الحديث، وبخاصة إل زمن الملك نبوخذ نصر الثاني ملك بابل (605-563) قبل الميلاد. والاجر غير كامل وهي يمثل اما الجزء السفلي أو العلوي من ذلك الاجر.

الكلمات المفتاحية: الملك نبوخذ نصر الثاني؛ مي إنليل؛ اراختوم؛ العصر البابلي الحديث؛ الكتابات المسمارية.

1. Introduction

This Cuneiform brick inscriptions founded in the survey of Mi.Enlil Arakhtum survey at Tell Kozkhan, Tell Bent al-Ameer, Tell Adday, and Tell Saeed north Ad-Diwaneyah province (Fig.1). This inscription back to Neo-Babylonian period especially to Nebuchadnezzar II king of Babylon (605–563) B.C. It's represented a lower or upper part from different stamps.

The project of Mi.Enlil-Arakhtum survey, called by this name because these are the ancient names of two branches of the Euphrates River which are attested in cuneiform sources. The aim of the survey is – to reveal the real total number of all the sites which are lying along the ancient river courses. I have to add here that the area has never been surveyed before. The area of the archaeological survey is occupied with many villages and the surfaces

devoid of elevations. This surface is easily characterized by its symmetrical structure, level and gradual slope from the northeast to the southwest. Different type of archaeological finds was collected from the surface of the sites including pottery, Glasses, shells and metal.

We would like to publish here another group of inscription Nebuchadnezzar II (also see appendix 1). This inscription abbreviated from another longer royal inscription, (Walker, 1981 p.78). The bricks are known to have been reused in various reconstruction contexts. All bricks below are the same pattern with different moulds. Our former study about the same royal inscription were from one site (Al-Hussainy 2021, Al-Hussainy et al (forthco.)), here they come from different site located in Sumer-Dagharah survey that it gives more distribution of this kind of inscription. The archaeological context mainly late to the neo-Babylonian period, but some site this period has attested limitedly. (Appendix 2)

2. The bricks of Mi.Enlil-Arakhtum.

1. Aday. 16. B2

Transliteration:

^rdAK-ku-du-ur₂-ri^r-UR[I₃]
[LUGAL] ^rKA₂.DINGIR.RA^r[ki]
[za-ni-in]^rE₂^r SA[G.II₂]
u₃ E₂ [ZI.DA]
[IBILA a-ša-re-du]
[ša^dAK.IBILA.URI₃
[LUGAL KA₂.DINGIR.RA^{ki}]

Translation:

Nebuchadnezzar
king of Babylon
provider of the temple of Esagil
and the temple of Ezida
The foremost son
for Nabublezar
king of Babylon



2. Ady. 16. B1

Transliteration:

2 Some lines missing

[*za-ni-in* E₂ SAG.]^ʾIL₂^ʾ

[u₃ E₂ ZI.]^ʾDA^ʾ

[IBILA *a-ša-r*]^ʾe-du^ʾ

[ša^d A]^ʾK-[IBILA.U]RI₃^ʾ

[LUGAL]^ʾKA₂.DINGIR.RA^{ki}



3. Aday 1.B-1

Transliteration:

Some lines are missing

[LUGAL KA₂.DINGIR].^ʾRA^{ki}

[*za-ni-in* E₂ SA]G.I[L₂]

the complement is missing



4. Bent al-Ameer 1.B-2

Transliteration:

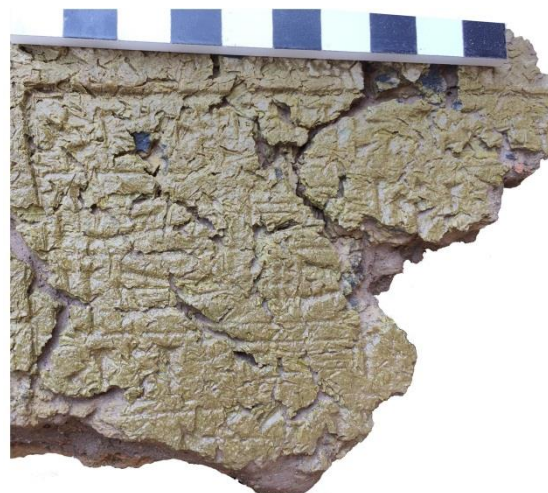
^dAK-ku-du-u^ʾ [r₂-ri-URI₃]

^ʾLUGAL KA₂.DINGIR^ʾ. [RA^{ki}]

za-ni-in^ʾ [E₂ SAG.II₂]

u₃ E₂ [ZI.DA]

the rest is missing



5. Tell Kozkhan

Transliteration:

The beginning is missing

[IBILA SA] G.KAL

[ša^dAK.IBILA.URI₃ LUGAL KA₂.DINGIR.R]A^{ki}



6. Tell Saeed

Transliteration:

[^d]AK-ku-dur₂-[ri^ʾ-URI₃]

[LUG]AL 'KA₂.DINGIR.[RA^ʾ[ki]]

[za-n]i-in [E₂ SAG.IL₂]



3. Appendix 1: List of Bricks found during the survey.

we would like to list all the bricks that not mentioned above, due to all of them are duplicates.

Kozkhan

Nebuchadnezzar II, most likely B1, still visible :

1 ... [...]

2 [...SA]G.KAL

3 [...DINGIR].RAki

Abu 'Adham, A2

Doorstone 30 x 22 x 7,5

Inscription not readable

Abu 'Adham, B1
Brick 30,4 x 20,2 x 7,1
No inscription

Ady-16 B/14
Brick 26 x 23,6 x 7
Inscription 14 x 15
Nebuchadnezzar II

Ady 16 B/3
Brick 17,5 x 15,5 x 7,5
Inscription 11 x 7,5
Nebuchadnezzar II

NUG.16.B1/1
Brick 18,3 x 18,5 x 5,5
Nebuchadnezzar II, barely readable

Maškan-šāpir 1/ 2020
Brick 30 x 28 x 6
Inscription 10 x 11
Šulgi "Label Inscription » cf. RIME E3/2.1.2.39

Bent al-Ameer 490954/3562190 P.017
Brick 9,5 x 9,5 x 6,5 (broken)
Inscription 7 x 3 (broken)
Most likely Nebuchadnezzar II, still visible: [...]ba-bi-lu^k[ⁱ], perhaps an exemplar of B5

Khalediya 57B
Brick 10 x 9 x 8
Inscription 4 x 9
Only vague traces of some six signs, one of them is BI
Khalediya 57C
Brick 9,5 x 10 x 8
Inscription 6 x 9
Two signs left, probably NI (the end of IN) and É, so probably Nebuchadnezzar II [za-ni-i]n É.[SAG.ÍL]

Khalediya 58
Brick 17 x 12 x 7,5
Inscription 3 x 9
One sign left, probably É

Tulūl Al-Khalediya D.21A.56
Brick 32 x 20 x 7,5
Inscription 11 x 7,5
Nebuchadnezzar II Inscription probably B6

Tulūl Al-Khalediya KLD 21A.60
Brick 8 x 8 x 7
Inscription 6 x 4,5
Only one unclear sign left

Hadwat Al-Farras
Brick 20 x 29,5 x 7
Inscription 13 x 5,5
Nebuchadnezzar II, still visible:
1 ^dAG-[...]
2 IBILA [...]
3 ša ^d[...]

4. Appendix 2: List of sites that consist Neo-Babylonian period.

Tell al-Gamad ..OB, Neo-Baby, PAR
Tell Saeed D.. OB, Neo-Baby, PAR
Tell Merza A...OB, Neo-Baby, PAR
Tell MerzaB...OB, Neo-Baby, PAR
Tell Kozkhan...Neo-Baby, PAR, SA, ISL, L.ISL
Tell Maqam Ismael...OB, Neo-Baby, PA, SA, ISL
Ishan Hassan... Neo-Baby, PA
Tell Abu-Taroof,S. URUK, JN, EDI, EDII
Tell Abu-Sakher.... OB, Neo-Baby, PA, SA
Tell Abu-Shaieb.. Neo-Baby, PA, SA, ISL
Tell al-Newaser... Neo-Baby, PA, SA, ISL
Tell al-Amarien.... Neo-Baby, PA, SA, ISL
Tell al-Nabee Shuaeb... Neo-Baby, PA, SA, ISL
Tell Um-Adood... Neo-Baby, PA, SA, ISL
Tell Abu-Jaseeb S. OB, Neo-Baby, PA, SA
Tell Bent-al-Ameer..... OB, Neo-Baby, PA, SA
Tell Abu-Sakharah..... Neo-Baby, PA, SA

OB: Old-Babylonian pottery

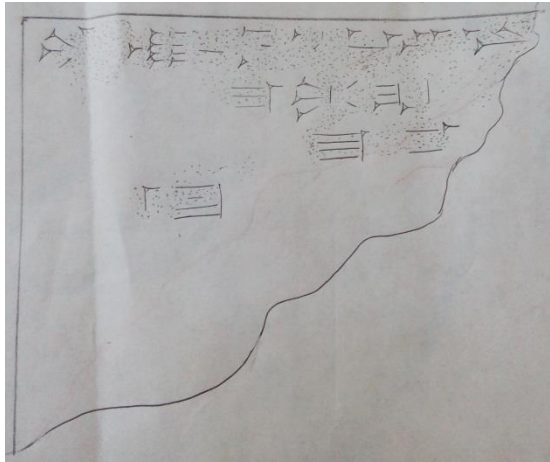
Neo-Baby: Neo-Babylonian pottery

PA: Parthian pottery

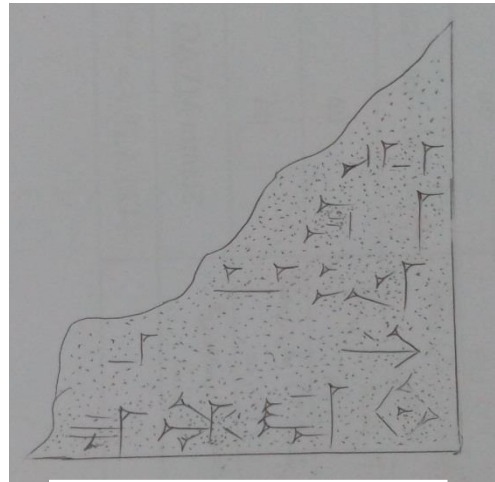
SA: Sassanian pottery

ISL: Islamic pottery

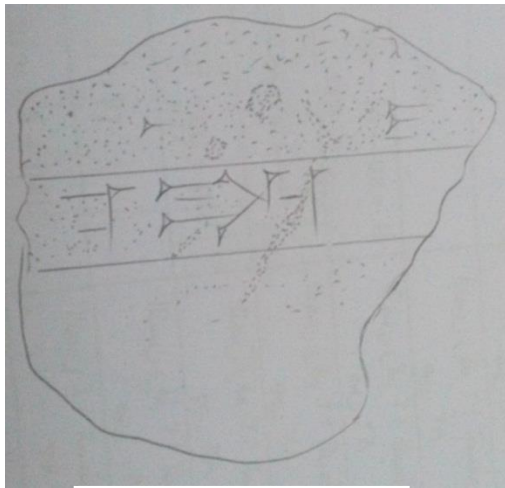
L.ISL: Late Islamic pottery



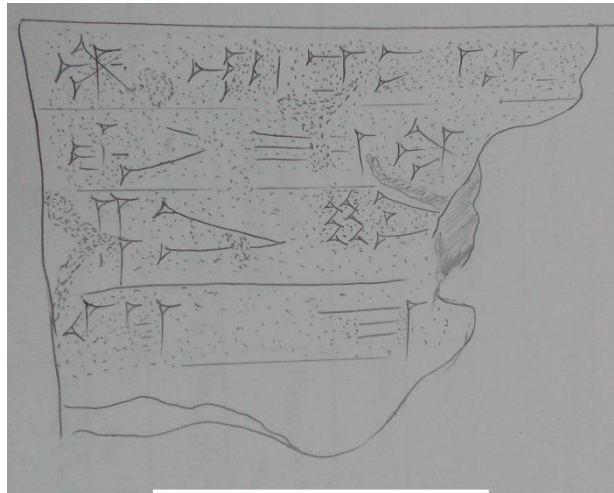
1. Ady. 16. B2



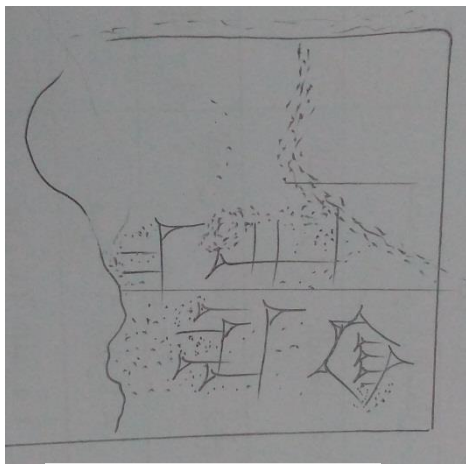
2. Ady. 16. B1



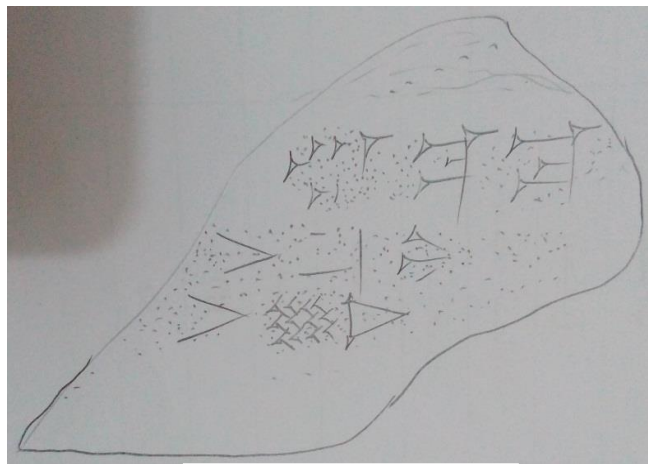
3. Bent al-Ameer



4. Aday 1.B-2



5. Tell Kozkhan



6. Tell Saeed

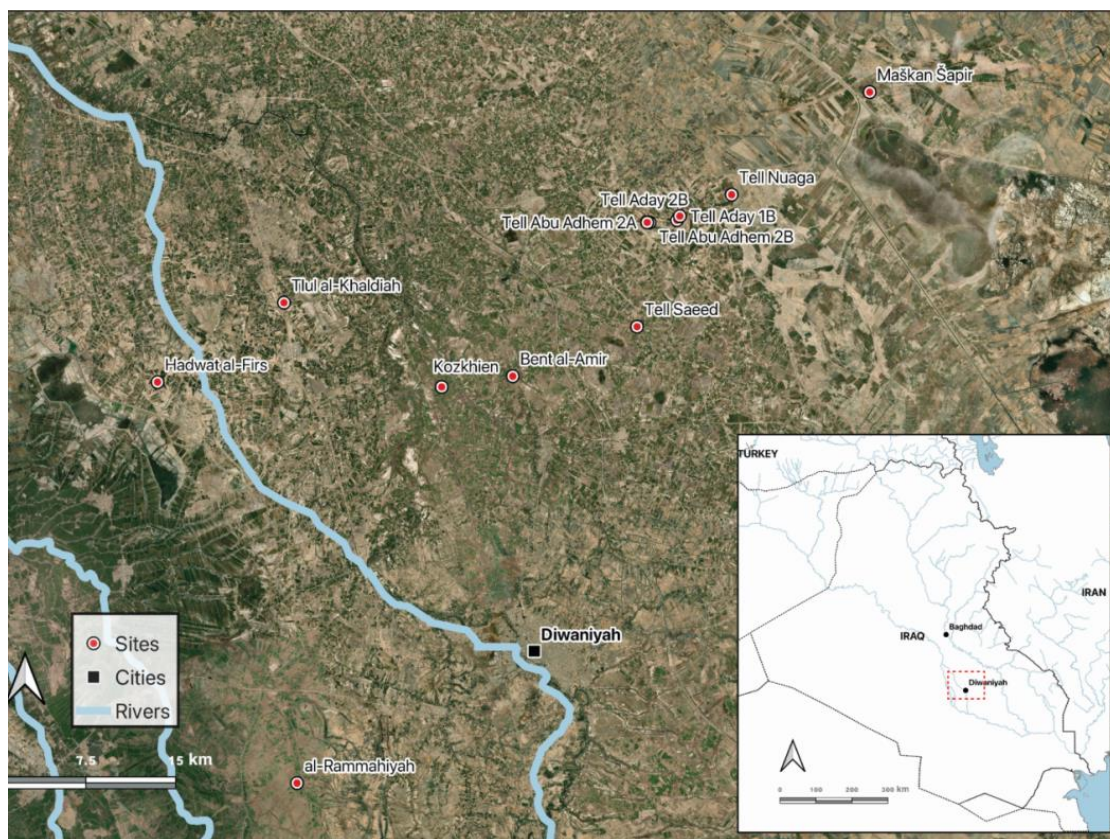


Fig.1: Map showing Mi.Enlil-Arakhtum area within the locations of bricks

Bibliography:

- Al-Hussainy, A. (2021): Bricks Inscriptions from the city of al-Rammahiyah Survey (2020), *ISIN* 1, pp. 9-15.
- Al-Hussainy, A. 2018: Inscriptions of Nebuchadnezzar II from the Iraqi Excavations at Marad, *Mesopotamia* LIII, pp. 49-58.
- Al-Hussainy, A.; Jawdat J. (Forthco.): Inscription from the Survey of the land of Malgium.
- Walker, C.B.F. 1981: *Cuneiform Brick Inscriptions in the British Museum, the Ashmolean Museum Oxford, the City of Birmingham Museum and Art Gallery, the City of Bristol Museum and Art Gallery*. London.