

# قناة شط البصرة دراسة بيئية

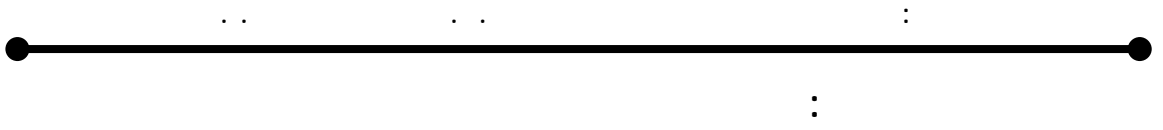
..

..

:

## **Abstract**

The present study includes a physiochemical study of the water of Shatt – al – Basra Canal . As for the physical side , the dissolved solids have been measured . On the other side , the chemical variables comprised pH , dissolved oxygen , alkalinity , total hardness , calcium , magnesium , nitrate , nitrite and phosphate . All variables were beyond the impermissible level of drinking water except for pH , nitrate , nitrite and phosphate . As regards the agricultural purposes , water was usable in almost all stations . It is worth saying that the water of Shatt – al – Basra Canal is considered unsuitable for food industries in most of the stations selected due to its contents of total hardness , dissolved solids and calcium . It is also worth mentioning that the water of Shatt – al – Basra Canal is unsuitable for fish living and breeding in most of the stations selected due to its contents of dissolved oxygen .



. ( )

( )

. ( ).

.

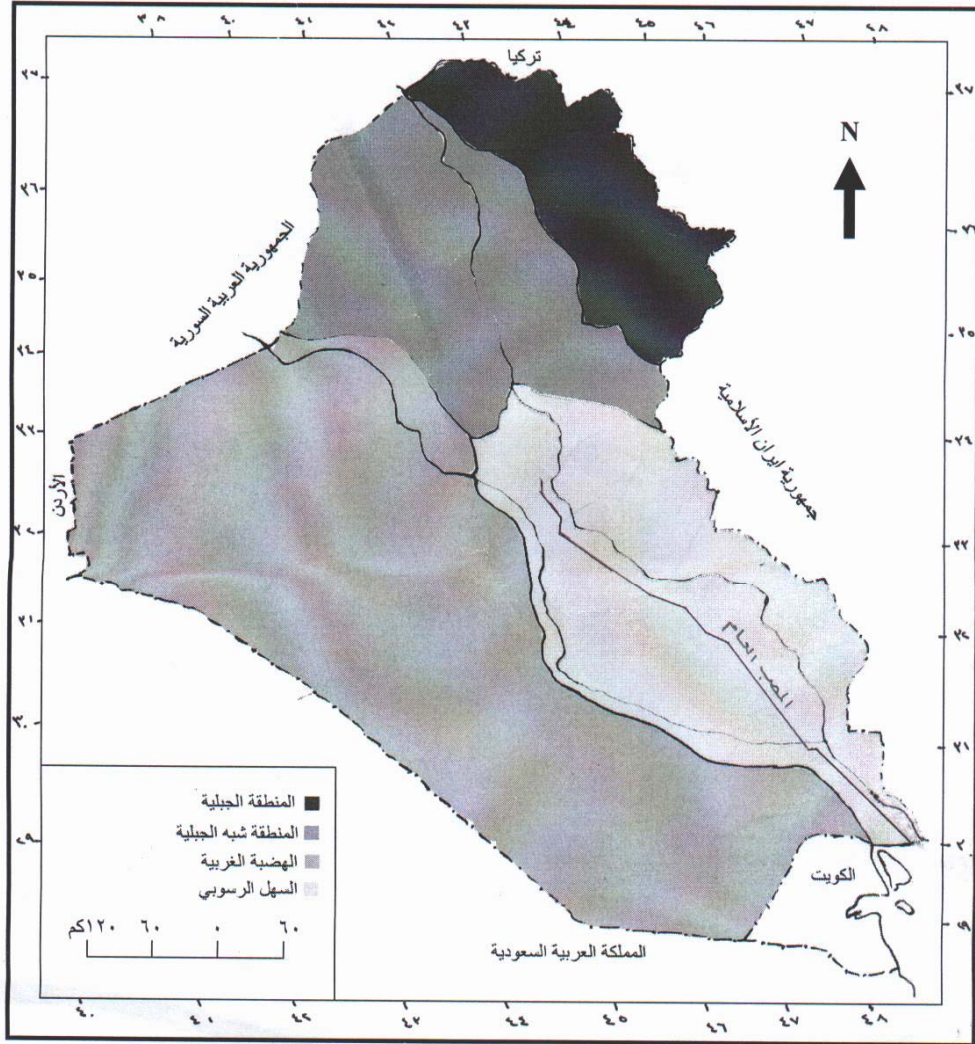
( )

( , - , )

( , - , )

( )

. ( )

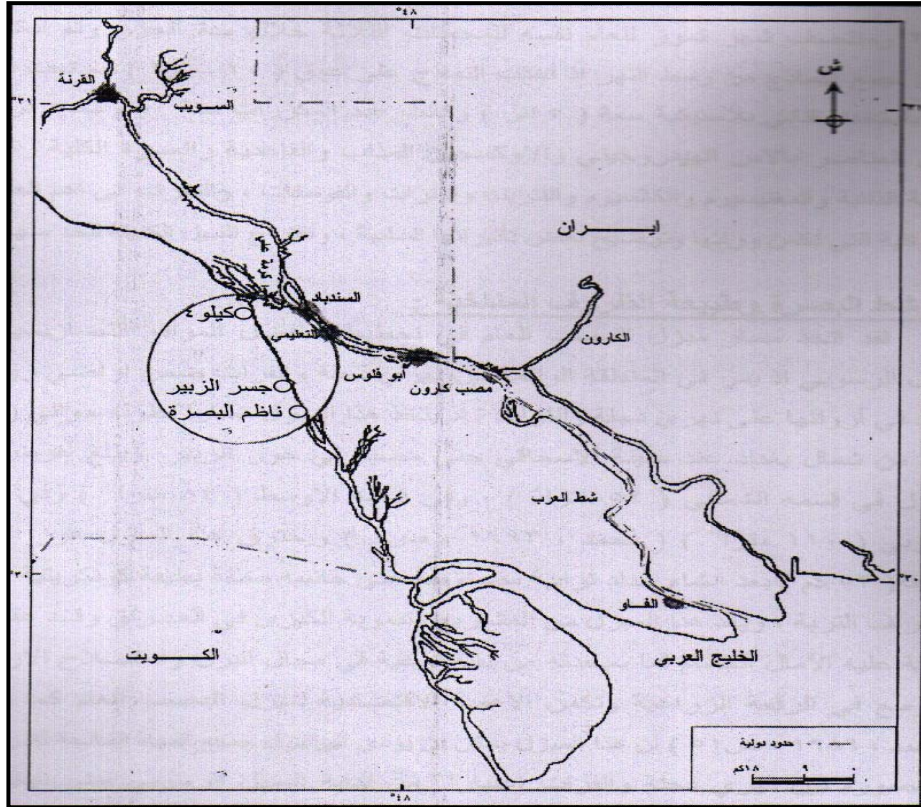


خارطة رقم (١) أقسام سطح العراق .

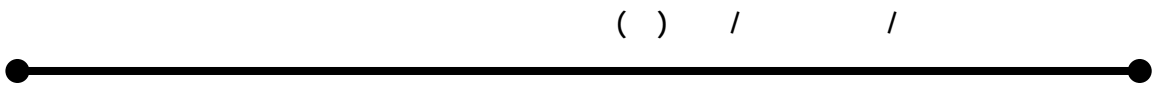
المصدر :

١. الهيئة العامة للمساحة ، خارطة العراق الإدارية ، مقياس الرسم : ١ / ٦٠٠٠٠٠٠ ، بغداد ، ١٩٩٢ .
٢. محمد أزهري سعيد السمك ، العراق دراسة إقليمية ، الجزء الأول ، جامعة الموصل ، ١٩٨٥ ، ص ٢٠ .

( )



( )



- )

( )

(

:

( )

( )

( ) ( ) ( )

( )

)

(



( ) ( )

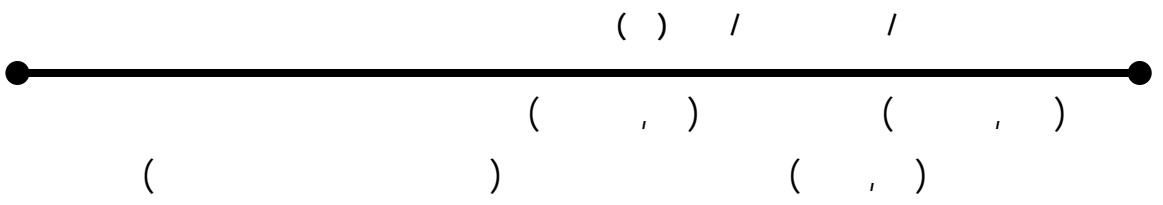
( )

( ) ( )

( , ) ( , )

( , ) ( , )

( ) ( ) ( )



( )

( / , ) ( / , )

( / , )

( / , )

%

%

) ( )

.(



( )

( ) /	( ) ( )	( ) ( )	( ) ( )	
,	,		,	
,	,		,	
,	-		,	
,	,		,	

:

( )

-

-

-

:

-

:

. ( P<sub>H</sub> )

-

. ( DO )

-

. ( Alkalinity )

-



( ) / /



. ( T.H ) -

. ( TOS ) -

. ( Ca ) -

. ( Mg ) -

. ( NO<sub>3</sub> ) -

. ( NO<sub>2</sub> ) -

. ( PO<sub>4</sub> ) -

: ( **P<sub>H</sub>** ) ( )

( )

/ , , )

. ( / , ) ( ) (

( )

. ( )



. ( )

/ ( )

				/
,		,	,	
,	,	,	,	

:

( P<sub>H</sub> )

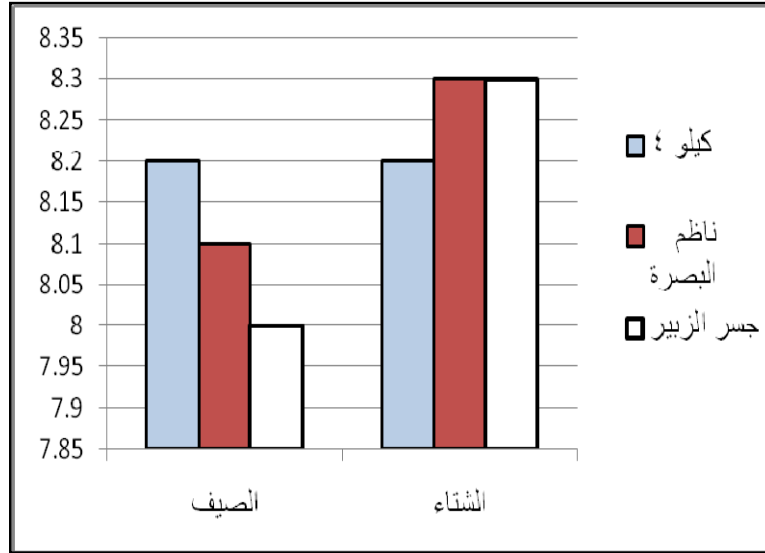
. ( / , ) ( ) ( / , )

)

. (

( ) / /

( )



/

( )

:

:( DO )

( )

( )

( / , , , )

( )

.( / , ) ( )

)

.(



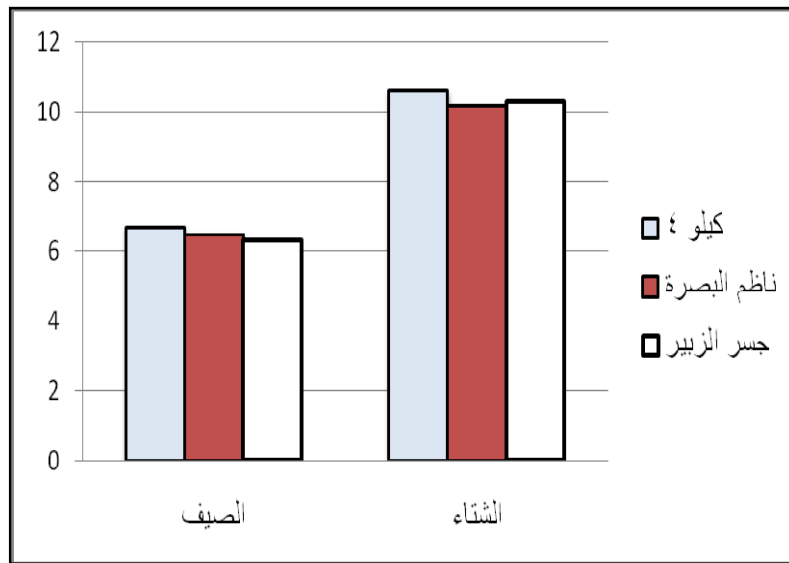
/ ( )

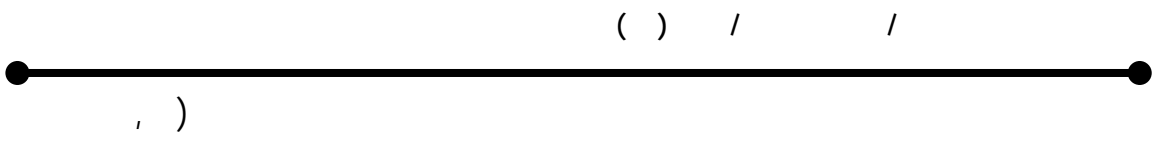
'	'	'	'	
'	'	'	'	

:

( )

/





( / / , ,  
( / , ) ( )

( )

.

: ( )

)

( )

( /

) (

( /

, ) ( )

. ( )



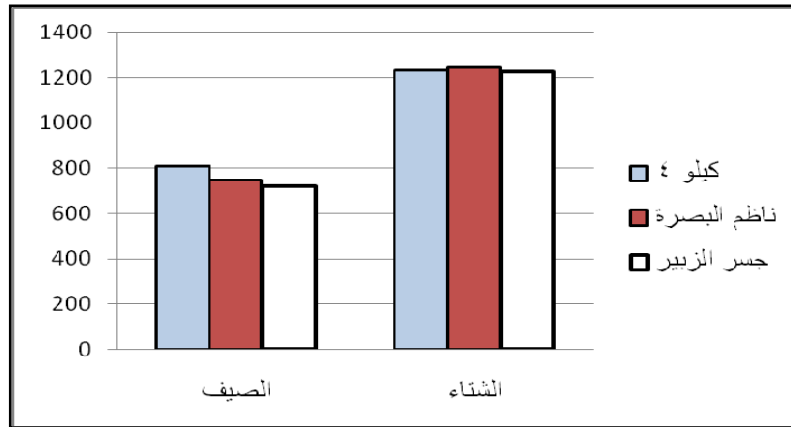
/ ( )

				/

:

( )

/



( )

:

)

/

)

( )

( /

.(

.(

)

( ) / /



) .

.(

: ( )

)

( ) ( / ) (

.( / ) ( )

AL – Laami et aL , et , aL 1995 , )

.( ( ) ( 1986

/

( )

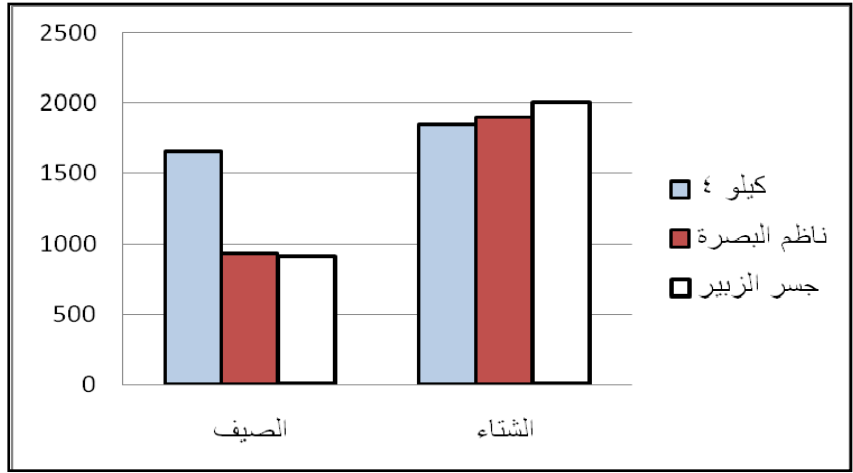
				/

:



( )

( / )



( )

:

)

. ( / ) ( ) ( /

. ( )

: ( )

( )

( / ) ( )

. ( / , ) ( )



( ) / /



)

.( Antoine and AL – Saadi , 1982 ) (

( )

/

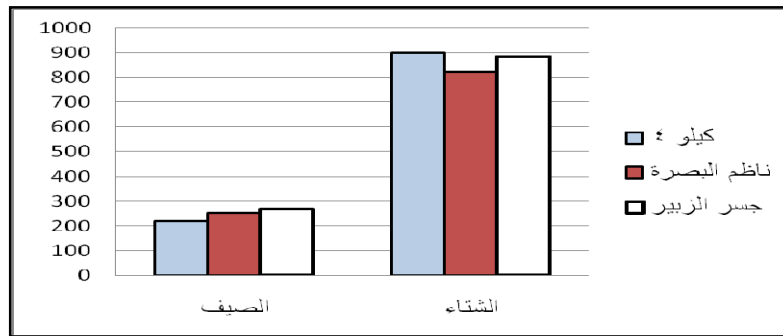
( )

				/

:

( )

( / )



( )

:



)  
.( / , ) ( ) ( /  
  
).  
  
.(  
:  
( )  
)  
( / ) ( )  
.( / ) ( )

. ( )  
/ ( )

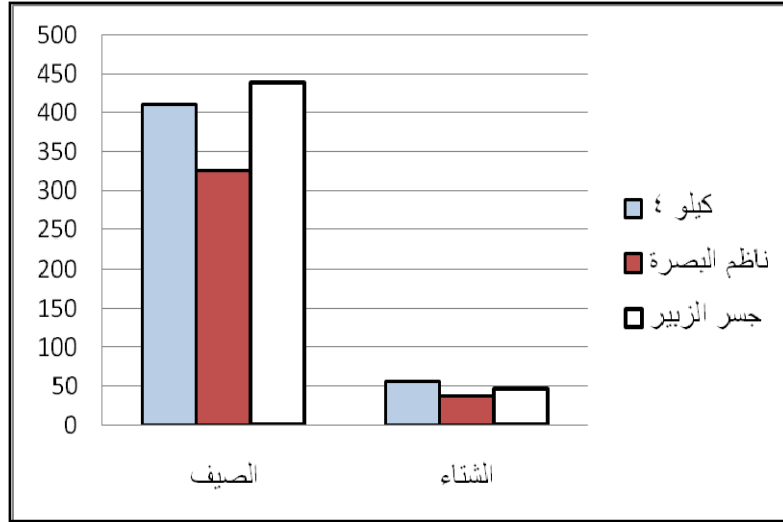
				/

:

( ) / /

( )

( / )



( )

:

)

( / , )

( )

( /

( - )

. ( ) .



: ( TDS ) ( )

( )

( / ) ( )

. ( / , ) ( )

Comin et al , )

( ) ( 1983

)

( Dux bury and Duxbury 1997 ) (

. ( )

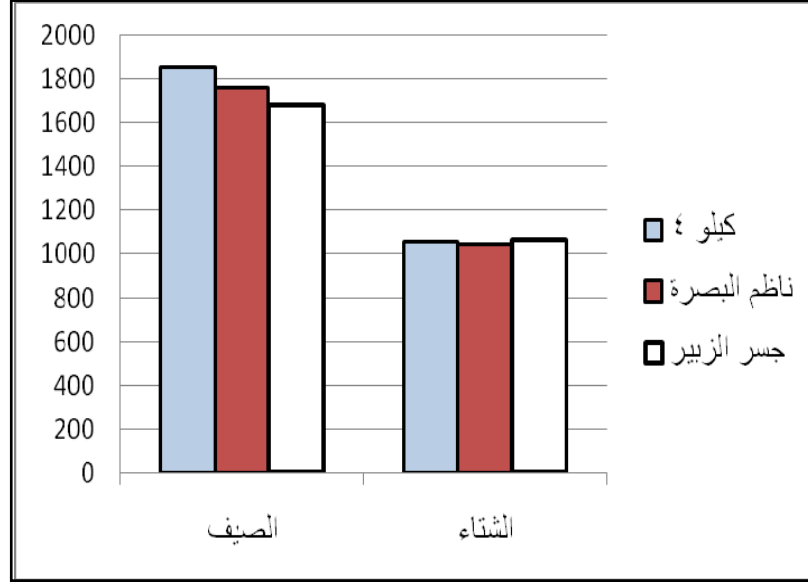
/ ( )

				/
,				
,				

:

( ) / /

( )



( )

:

)

. ( / , ) ( ) ( /

. ( )



: (NO<sub>2</sub>) ( )

)  
( / , , ) ( )  
( / ) ( ) ( )

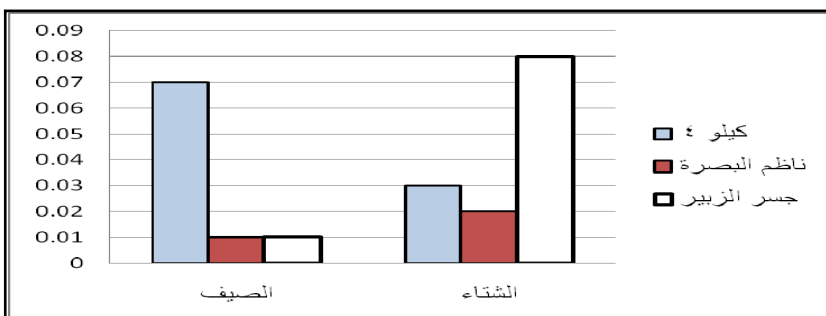
. ( : Comin et al, 1983 )

/ ( )

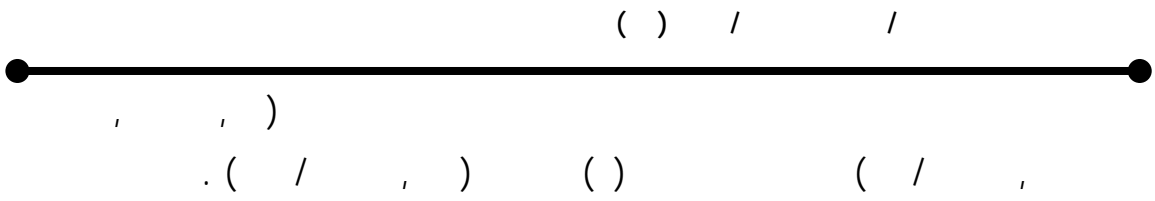
/	/	/	/	
/	/	/	/	

:  
( )

/



( ) :



. ( )

: (NO<sub>3</sub>) ( )

( )

, , , ) ( )

. ( / , ) ( ) ( /

. ( )

Antoine )

. ( ) ( and AL – Saadi , 1982

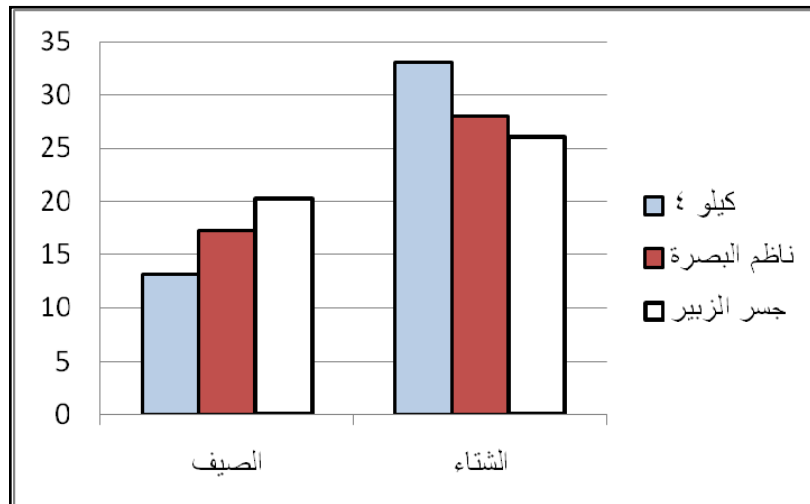


/ ( )

				/
/	/	/	/	

:

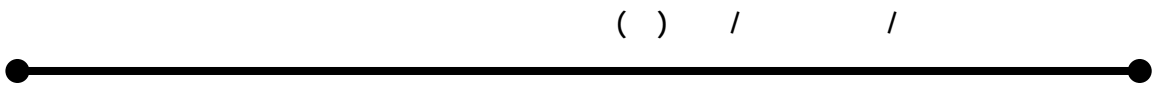
( )



( )

:





)  
( / ) ( ) ( /

Comin et al., )

. ( 1983

: ( **PO<sub>4</sub>** ) ( )

)

( / , , , ) ( )  
( / , ) ( ) ( )

( Holtan, et al., 1988)

. ( ) .



/

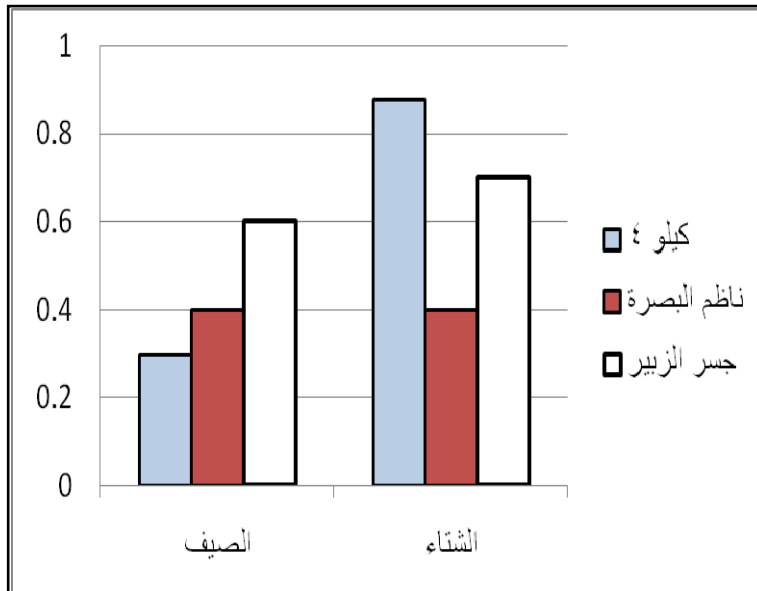
( )

,	,	,	,	
,	,	,	,	

:

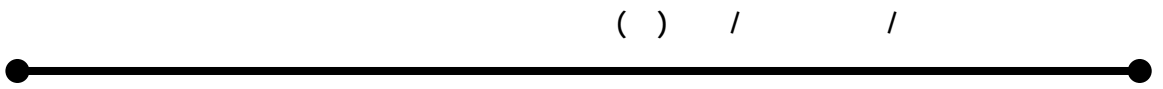
( )

/



( )

:



( ) / /

, , )

( / , )

( ) .

( / ,

.

-

:

( )

( )

.( / , )

( , )

( )

( PH )

.( )



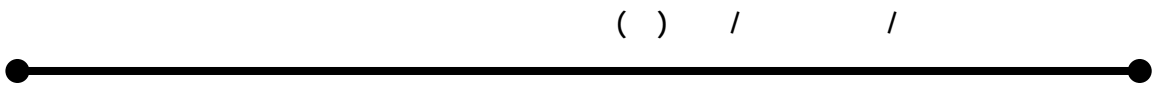
( )

/ ( )	/ ( )	/ ( )	/ ( )	/ ( )
, - ,	, - ,	,	,	
		,	,	
			,	
		,	,	
	-	,		
		,	,	
	Nil - ,	,	,	
			,	
	- ,	,	,	

)

( ) ( ):

.(  
( )  
( )



( ) / /

( )

( )

.( / )

( )

( )

.( / )

.( )

( )

( )

.( / )



. ( )

. ( )

( )

( )

/ - )

(

( T.H )

. ( )

( )

( )

/ )

. (

( ) / /



. ( )  
TDS

. ( Evison , 1988 ). ( FC )

. ( ) .

).

( )

. (

( )

. ( / , )



.. .. :

. ( / , )  
( )

( )

.( / )

:

( NO<sub>2</sub> )

-

. ( )

).

-

. (

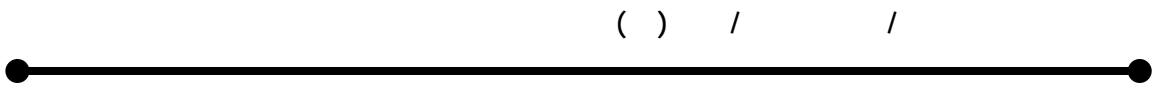
( )

( )

. ( / - , )

.( / - , )





( ) / /

.( ) .

( )

( )

.( / , - , )

.  
( )

( )

.( / )

( )

( )

.( / )



( )  
( )

.( / )

.  
( )  
( )

.( / )

.  
( )  
( )

.( / - )

.

( ) / /

( )

( ) /	( ) /	
-	-	

:  
FAO , " Guidelines for Irrigation water Quality " , ministry of .  
Environment , Human Resonrce Development & Employment .  
Development of Envirenment , U.S.A. 1999 .

( )

( )

. ( / )

( )



( )

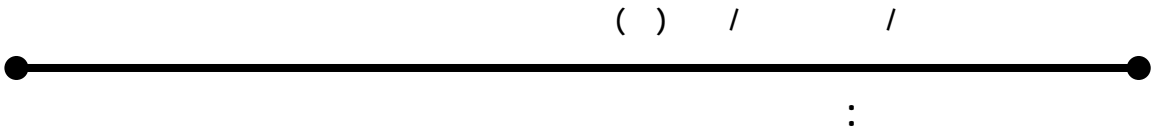
.( / - )

( )

( )

.( / )

.



( PH )

.

.

.

.

.



T.D.S

( ) / /



(NO<sub>2</sub>)



( NO<sub>3</sub> )



( ) / /





..

..

:

:

.

+

.

.

.

.

.

.

.

.

.

)

.

(

( ) / /



- 
1. AL – Laami ,AA. , AL – Saadi , H. A. and Kassim , T. I. ( 1995 ) . Limnological features of Qadisia Lake, North – west Iraq . AL – Mustan siriyah Journal of sciences . ( in press ) .
  2. Antoine , S. E. and AL – Saadi , H. A. ( 1982 ) . Limnological studies on the polluted Ashar canal and Shatt AL – Arab river at Basrah ( Iraq ) , Int . Rev . Ges . Hydrobiol 67 ( 3 ) : 405 – 418 .
  3. Comin , F.A., Alonso , M. Lopez, , P. and come lles . M. (1983) . Limnology of Gallo can to lake , Aragon , north eastern spain , Hydrobiol . 105 .
  4. Duxbury , A. ( : and Dux bury , A. B. ( 1997 ) An in introduction to the world's oceans . 5thed ., McGaw – Hill, New York, 504 pp.
  5. Evison , L. M., Comparative studies on the survir al of Indiecation or Ganisms and pathogens In Fresh 11 / 12 / 1988.
  6. Holtan , H.; Kamp. Nielsen , L. and stuanes, A.O. ( 1988 ) . Phosphorus in soil , Water and sedimen an ove view , Hydrobiol . 170 : 19 – 34 .
  7. FAO, " Guidelines for Irrigation water Quality " , Ministry of environment , Human Resource Development & Employment . Development of Environment , U.S.A. 1999.