

## A comparative Study of the Determination of Diclofenac sodium in pharmaceutical Formulations by flow injection chemiluminescence and High performance liquid Chromatography

Ali Ibraheem Khaleel, Suham T. amine and Abdul Barry.M. Mahood  
*Chemistry Department, College of Education, Tikrit University, Iraq*

(NJC)

(Received on 11/3 /2006)

(Accepted for publication on 19/8/2006)

### Abstract

This study involves development of a new flow injection chemiluminescence(FI-CL),andhighperformanceliquid chromatography(HPLC) methods for the determination of Diclofenac sodium (D.S) in pharmaceutical tablets preparations.

Chemilunescence method was based on inhibition of the (CL) of luminol-hydrogen peroxide system catalyzed by cobalt in alkaline medium producing a blue Luminescence. In the presence of (DS), cobalt (II) reacts immediately with this drug forming inactive complex preventing the catalytic effect of cobalt (II) Ion. In this case an inhibition of the (CL) occurs which is proportional to the amount of the drug added. The linearity of this method was in the range of (0.9858-8.904)  $\mu\text{g ml}^{-1}$  with a correlation coefficient of 0.9969, a relative standard deviation (RSD) 0.463 %, with detection limit of (0.410)  $\mu\text{g ml}^{-1}$ .

In HPLC method the drug was analyzed by Reverse phase HPLC (Rp-HPLC) method using a suspect ODSC<sub>18</sub> (25 cm  $\times$  4.6 mm id )with (5  $\mu\text{m}$  particle size) and isocratic elution with a mobile phase containing 16% acetonitrile in 0.02M sodium acetate buffer pH(5.5) at flow rate of 1m  $\text{min}^{-1}$ , 20  $\mu\text{l}$  sample loop, temperature 30C<sup>0</sup> and the uv-detector was set at  $\lambda_{\text{max}}$  220 nm. The Linearity was in the range of (10-60)  $\mu\text{g l}^{-1}$  with a correlation coefficient of 0.9945 and the RSD 0.64 %, with a detection limit 3.4  $\mu\text{g l}^{-1}$

The two methods have been applied successfully to the determination of (D.S) in tablets formulation with mean recovery (96.6- 98.48%).

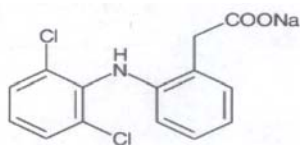
diclofenac sodium

(9-1) . (Co<sup>+2</sup>)

/	0.42	0.9969 (r)	/
		.% 0.23	RSD
(D.S)			
25 ) ODSC <sub>18</sub>	Rp-HPLC	-	
(Isocratic elution)		5	( 4.6 ×
0.02		%16.0	
20	/ (1)	5.5=pH	
. / (60 – 10)		220	30
/	3.4 % 0.72		
-96.6	Diclofenac sodium		
			.%98.48

## Introduction

Diclofenac sodium(D.S.), sodium 2-[2,6-di chlorophenyl amino] phenyl ] acetate<sup>(1)</sup> is acute treatment of mild to moderate pain, ankylosing spondylitis, primary dysmenorrheal, acute and chronic treatment of rheumatoid arthritis<sup>(2-3)</sup>.



Many methods have been developed for the determination of (D.S) in various matrices such as pharmaceutical formulations, blood, urine and aqueous solutions. Hessian<sup>(4)</sup> used plastic membrane electrode for selective determination of (D.S) in pharmaceutical preparations. The calibration graph was linear in the range of (0.05-1.0) mM and the detection limit was 0.023 mM. A capillary electrophoresis method for the determination of (D.S) in commercial simulated tablets formulation has been described by parodo<sup>(5)</sup>.The calibration curve was linear from (40-120) µg/ml with  $r = 0.9992$ .

Damian<sup>(6)</sup> used a spectrofluorimetric method for the

determination of D.S in tablets and ointment. Fluorescence intensity was measured at 362 nm (excitation at 287 nm) calibration graph was linear from 0.2-5 mg ml<sup>-1</sup> with a detection limit of 0.2 µg /ml and the recovery ranged from 95% - 109% . A number of other techniques such as HPLC<sup>(7)</sup> reversed phase, NP-HPLC<sup>(8)</sup> , TLC<sup>(9)</sup>, HPLC-MS<sup>(10)</sup>, Voltammetric and flow-injection spectrophotometric methods<sup>(11)</sup> have been reported for the assay of (D.S) in commercial dosage forms .

The present paper describes two developed methods for the determination of (D.S) in the pharmaceutical preparation samples. The first methods describes a flow injection chemiluminescence technique in the presence of luminol, H<sub>2</sub>O<sub>2</sub> and cobalt ion Co<sup>+2</sup>, while the second describes Rp-HPLC method.

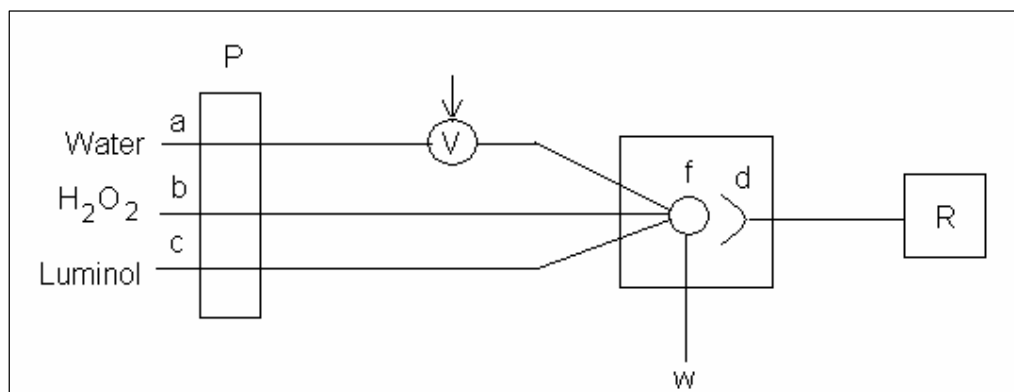
## Experimental

### (1) Chemiluminescence Apparatus:-

The Flow system (Fig.1) consisted of one peristaltic pump (PLC parapose model 132100) which delivers sample and H<sub>2</sub>O<sub>2</sub>- luminol streams. A PTFE tubing (0.5 mm i.d.) was used to connect all the components in the flow system. A rotary injection valve was used for

sample injection and the signal was recorded using Philips Recorder (PM

8251).



**Fig(1) Schematic diagram of the flow injection system for the determination of (D.S).**

(a) H<sub>2</sub>O (b) H<sub>2</sub>O<sub>2</sub> (c) luminol (p) peristaltic pump (v) injection valve (f) Flow cell (w) waste liquid (d) photomultiplier tube (R) Recorder.

## (2)HPLC Apparatus

The analysis was performed on a CECIL 1100 HPLC (EC-200) UV-Visible detector of one solvent reservoir and high performance pump (pressure range (0-500kg. cm<sup>-1</sup>). The injection valve was Rheodyne 7125 USA and was fitted with 20μl sample loop. Separation of drug was carried out on a (25 cm × 4.6 mm.id) stainless steel (5 μm) particle size ) ODS-C18 reversed-phase provided from Supelco.

### First method

#### Determination of Diclofenac sodium using a new Flow injection chemiluminescence

#### Reagents

Luminol(FLuka),Hydrogen peroxide, CoCl<sub>2</sub>.6H<sub>2</sub>O ,H<sub>2</sub>SO<sub>4</sub> (96%)(BDH) ,while Diclofenac sodium and other materials were donated from (S.D.I).

#### Preparation of Stock Solutions

The D.S(100)μg/ml was prepared by dissolving 0.0100 gm D.S in 100ml of distilled water. The luminol stock solution (0.001)mol.l<sup>-1</sup> was prepared by dissolving 0.3543gm in 2L of 0.1M Na<sub>2</sub>CO<sub>3</sub>(21.1gm/l

distilled water). Stock solution of 100μg.ml<sup>-1</sup> Co<sup>+2</sup> was prepared by dissolving 0.4039 gm of CoCl<sub>2</sub>.6H<sub>2</sub>O in 1L H<sub>2</sub>O. Hydrogen peroxide solution was prepared by dilution 11.6 ml of 35% H<sub>2</sub>O<sub>2</sub> (sp.g 1.13 gm.ml<sup>-1</sup>) up to 1L with distilled water. KMnO<sub>4</sub> (0.1M), sodium oxalate (0.1M) were prepared separately by dissolving (18.8g) and (13.39g) each in 1L distilled water respectively.

#### Procedure for determination:

As preliminary conditions, the following parameters were chosen, luminol concentration (3×10<sup>-5</sup>M) ,H<sub>2</sub>O<sub>2</sub>(0.01M),Co<sup>+2</sup>( 0.6ppm),H<sub>2</sub>SO<sub>4</sub> concentration that used for preparation Co<sup>+2</sup> (5×10<sup>-5</sup>M),flow rate for reagent 3ml and Sample volume(200μl).

#### Results and Discussion

In the absence of (D.S), the (CL) of luminol- H<sub>2</sub>O<sub>2</sub> -Co<sup>+2</sup> system is intense. In this study, trace amounts of (D.S) were found to decrease the (CL) of luminol - H<sub>2</sub>O<sub>2</sub> -Co<sup>+2</sup> system.

##### a. Effect of Luminol Concentration:-

The effect of luminol concentration on the CL intensity(ΔI )was studied (Fig.2), ΔI

increased with increasing the luminol concentration up to  $5 \times 10^{-3}$  mol.  $\text{l}^{-1}$ . After that the (CL) intensity started to decrease, this can be attributed to the complex formation between  $\text{Co}^{+2}$  and the excess luminol and the latter can act as a bidetate ligand<sup>(12)</sup> which in turn consumes cobalt ions, thus the intensity of (CL) decreased.

**b. Effect of  $\text{H}_2\text{O}_2$  Concentration:-**

The effect of  $\text{H}_2\text{O}_2$  concentration on the net (CL) intensity was studied (Fig. 3). The  $\Delta\text{I}$  increased with increasing the concentration of  $\text{H}_2\text{O}_2$  up to  $10^{-2}$  mol.  $\text{l}^{-1}$ . Above this concentration, the  $\Delta\text{I}$  decreased with increasing of the  $\text{H}_2\text{O}_2$  concentration, so the concentration of  $10^{-2}$  mol.  $\text{l}^{-1}$  was selected to be the optimum and this is expected according to the literature<sup>(12)</sup>.

**c. Effect of the acidity of  $\text{Co}^{+2}$  Solution:-**

Figure 4 shows that the concentration of  $5 \times 10^{-3}$  mol.  $\text{l}^{-1}$  of  $\text{H}_2\text{SO}_4$ , used to prepare cobalt ion gave the highest intensity and was chosen for further uses.

**d. Effect of Flow Rate:-**

Flow rate is an essential parameter in FIA. The results obtained (Fig. 5) show a continuous increase of CL intensity as the flow rate increases because the catalyzed oxidation reaction is so fast and reaches equilibrium state before departing the flow cell<sup>(12)</sup>. A total flow rate of 3ml/min was chosen as the suitable flow rate since it gives a reasonable CL intensity with the lowest reagent consumption.

**E. Effect of Injected Sample Volume:-**

A 50, 100, 150, 200  $\mu\text{l}$  sample loops were tested. Fig. 6 represents the results obtained and indicate that a sample loop of 200  $\mu\text{l}$  volume gave the best results.

**Recommended conditions:-**

**Analytical**

According to the results obtained, the optimum conditions for the determination of (D.S) using (FI-CL) method are given in table (1):-

**Interferences Study:-**

The effect of various foreign species on the determination of (D.S) was investigated. The presence of 100 ppm starch, glucose, lactose and sucrose gave no significant interfering effect on CL of (1-9) ppm (D.S) as shown on table 2.

**Calibration graph:-**

A calibration graph (fig.7) of relative CL intensity Vs the (D.S) concentration was constructed at the optimal conditions. The regression equation is  $y = 19.017x + 7.0278$ ,  $r = 0.9969$ .

The linear range for the determination of (D.S) is (1-9) ppm. The reproducibility of the method is satisfactory with a relative standard deviation of 0.23 % at  $8 \mu\text{g ml}^{-1}$  (D.S).

**Pharmaceutical Applications:-**

The proposed method was applied to the determination of (D.S) in pharmaceutical preparation. The measured D.S. contents as a pure D.S and in diclofenac sodium tablets are listed in table (2). This table also includes the values obtained for the mentioned product using the reference procedure described in British pharmacopoeia<sup>(1)</sup>.

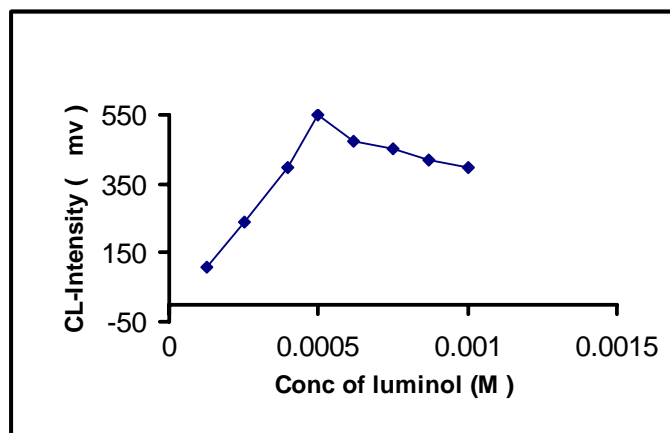
The values presented on table (2) reveal good agreement between the proposed and the reference methods.

**Conclusion**

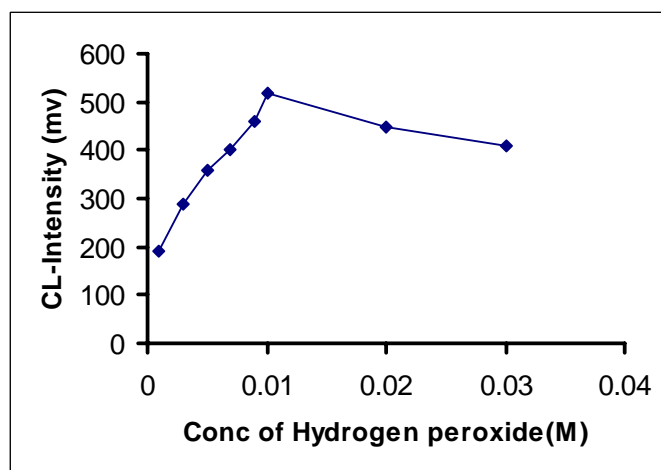
A flow injection CL method for the determination of D.S has been developed and compared with the method of British pharmacopoeia. The proposed method offers advantages of simplicity, rapidity, high sensitivity, low reagent consumption, and provides a linear range (1-9) ppm for the determination of (D.S). The

reproducibility of the method is satisfactory with a relative standard

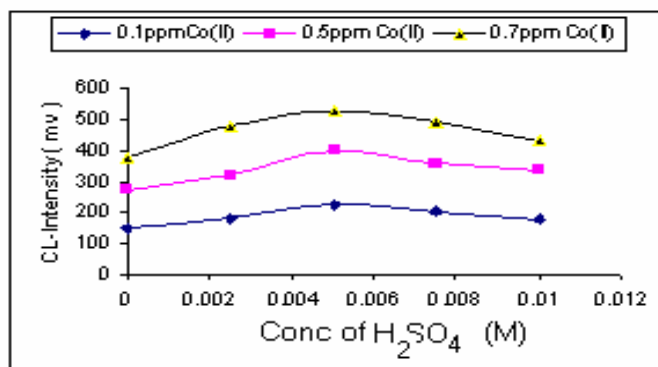
deviation 0.23% and the detection limit is 0.42.



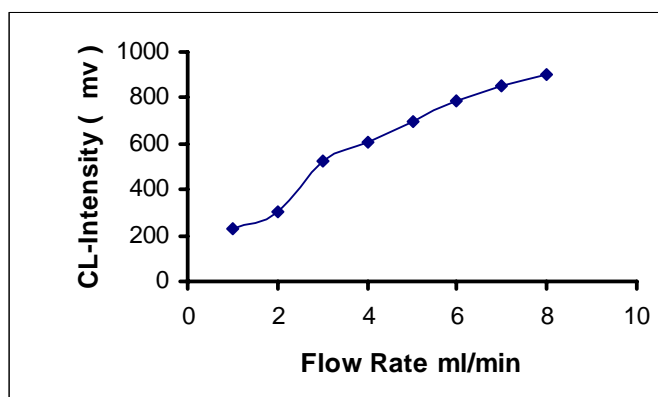
**Fig. (2)Effect of luminol concentration on the intensity of chemiluminescence.**



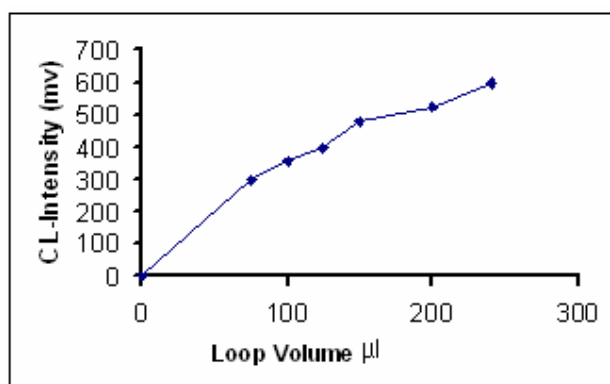
**Fig. (3) Effect of  $\text{H}_2\text{O}_2$  concentration on the intensity of chemiluminescence.**



**Fig. (4) Effect of the acidity of  $Co^{+2}$  solution.**



**Fig. (5) Effect of flow rate on the intensity of chemiluminescence**



**Fig.(6) Effect of injected sample volume on chemiluminescence intensity.**

**Table (1): Optimum conditions for the determination of(D.S) by (FI-CL).**

Parameters	Value
Concentration of luminol	$5 \times 10^{-3}$ mole. $l^{-1}$
Concentration of $H_2O_2$	$10^{-2}$ mol. $l^{-1}$
Concentration of $Co^{+2}$	0.7 ppm
Concentration of $H_2SO_4$	$5 \times 10^{-3}$ mole. $l^{-1}$
Injected volume(Drug)	200 $\mu l$
Flow rate	3 ml. $min^{-1}$

**Table.(2) Effect of Interference on chemiluminescence intensity.**

Interference	Interference Concentration $\mu g/ml$	CL intensity (m.v) $Co^{+2}$	Er%
Lactose	100	510	0.1
starch	100	515	0.2
M.H.B	20	512	0.2
P.H.B	20	513	0.6
Gelatin	100	510	0.5
Sodium saccharin	20	515	0.5
Aresoil	20	519	0.2
Mg-stearate	20	513	0.4
sucrose	100	514	0.1

**Second method:****Determination of Diclofenac sodium using a new Rp-HPLC Method:**

The determination of (D.S) by Rp-HPLC is based on the isocratic elution of the species on C18 column.

**Optimization of Experimental conditions:-****Reagents**

All chemicals and solvents were of analytical grade reagents. Acetate buffer was prepared by dissolving (1.64) gm of  $\text{CH}_3\text{CO}_2\text{Na}$  in 1L distilled water. The pH of solution was adjusted to pH 5.5 with 0.1M  $\text{CH}_3\text{COOH}$ . After preparation, it was filtered and degassed in an ultrasonic bath prior to use. Stock solution (100 $\mu\text{g/ml}$ ) of (D.S) was prepared by dissolving 0.010gm (D.S) in 100ml of the mobile phase (16% acetonitrile with buffer acetate).

**a. Effect of Different percentages of organic modifier in the mobile phase:**

Acetonitrile was used as a typical phase modifier for this study and was mixed with (0.02 M) sodium acetate buffer (pH 5.5). The obtained results indicated that the retention times of (D.S) decreased as the percentage of acetonitrile increased from (12-20 %). The best sensitivity, and reasonable analysis time were obtained at 16% of a cetonitrile Fig.(8).

**b. Effect of pH using 0.02M Acetate Buffer :-**

In general, the  $t_R$  value of each species can be correlated with the values of  $pK_a$  of the solute molecule<sup>(12,13)</sup>. To study the effect of

the pH of the mobile phase on the elution of the studied compound, the pH of the mobile phase was varied from 5.4 to 7.4 with 0.4 intervals. Figure 9 shows that there is a little change in the in values of  $t_R$  with change of pH and was found that pH 5.5 gives the best peak symmetry.

**c. Effect of flow rate of the mobile phase:-**

The aim of choosing optimum flow rate is to perform the analysis in short time with a reasonable sensitivity and peak symmetry preventing any band diffusion<sup>(10)</sup> which finally leads to high column efficiency. A change in the flow rate of the mobile phase from 0.8 to 1.8  $\text{ml min}^{-1}$  caused a decrease in the analysis time from 1.81 to 0.82 minute. Figure (10) shows the effect of flow rate on the retention time showing that a flow rate of 1.0  $\text{ml min}^{-1}$  is suitable.

**d. Effect of temperature:**

The effect of column temperature in the range of 25-45°C on the  $t_R$  values of D.S was investigated. Generally, increasing column temperature in  $R_p$  – chromatography decreases  $t_R$  and column efficiency increases by decreasing mobile phase viscosity<sup>(14,15)</sup>, which in turn lowers the pressure of column head. Figure 11 shows the relation between  $\log K'$  and  $1/T$ . A 30°C was found to give symmetrical band shape.



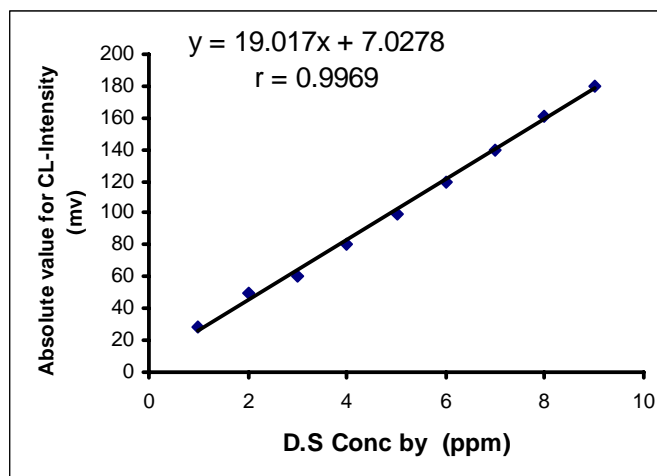


Fig. (7) calibration graph for the determination of (D.S) by FI-CL.

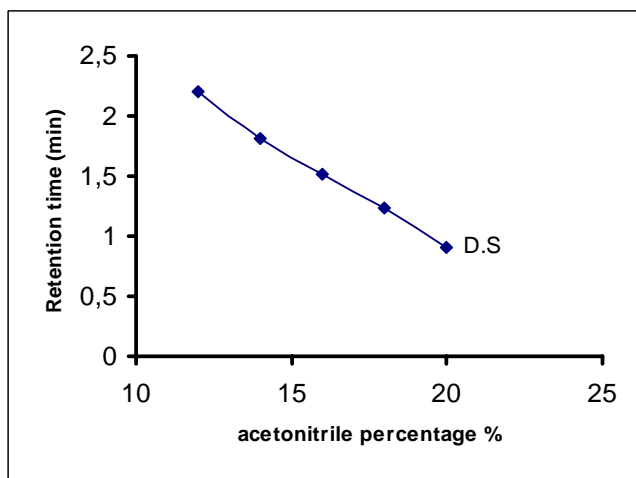


Fig.(8)Effect of organic modifier percentage ( CH<sub>3</sub>CN%) on the retention of (D.S).

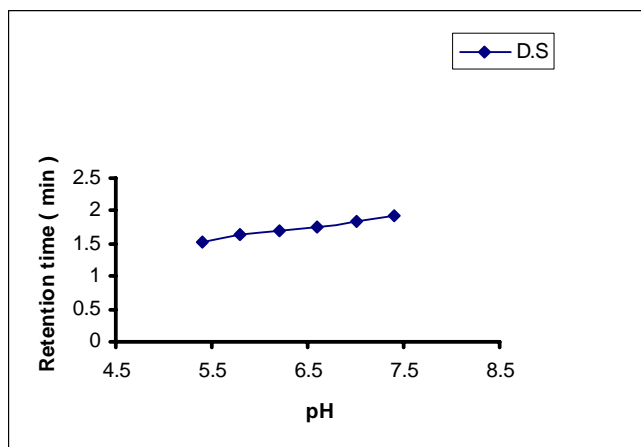


Fig. (9)Retention time of (D.S) on Rp-C18 versus pH.

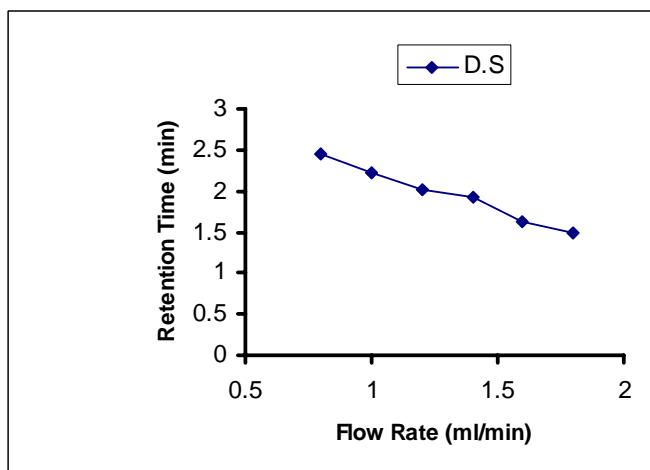


Fig. (10) Plot of  $t_R$  of drug against flow rate of the mobile phase.

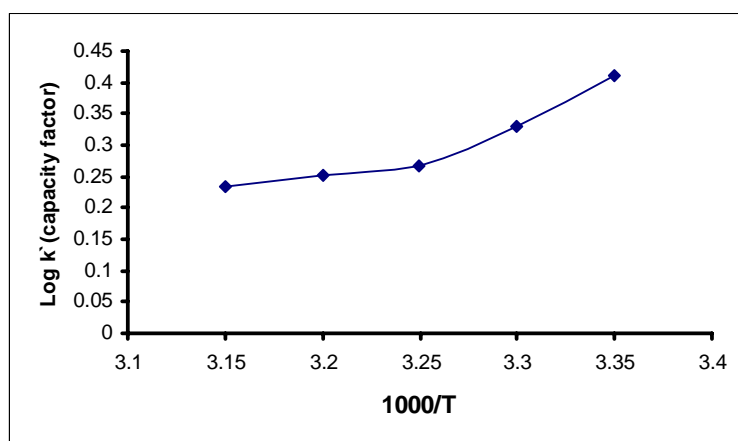


Fig.(11) Plot of  $\log k'$  of drug against  $1/T$ .

#### Recommended Analytical Conditions:-

According to the results obtained, the optimum experimental conditions established by reversed phase Rp-HPLC method are given and summarized in table3.

#### Calibration Graph:-

The recommended analytical conditions table(4) were used to construct calibration graph of

Diclofenac sodium by plotting the concentration ( $\text{mg. ml}^{-1}$ ) of drug against the peak area.

A linear calibration graph for the determination of Diclofenac sodium was obtained in the range of  $(0.01-0.06) \text{ mg.ml}^{-1}$  fig.(12). The analysis data obtained from calibration graph are summarized in table (5). The linear regression equation of Diclofenac sodium is  $y = 0.0002x - 10^{-7}$ .

**Table (3) Application of the (D.S) determination in pharmaceutical preparation**

Sample	*Recovery%		RSD%
	Proposed method	Standard method	
Pure Diclofenac sodium	98.87	99.25	0.236
Diclofenac sodium tablets	99.50	99.32	0.221

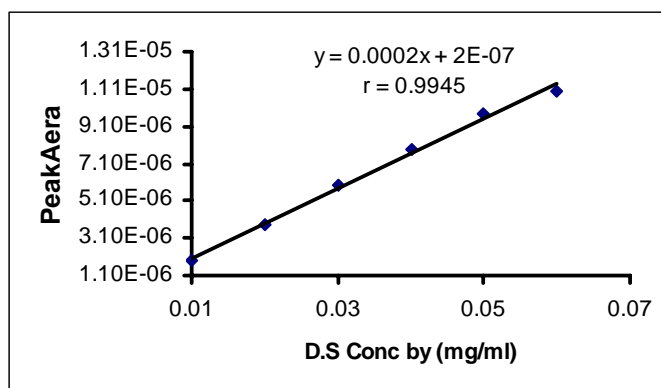
\*Each result is the average of three determinations.

**Table (4): The recommended analysis conditions for the determination of Diclofenac sodium using Rp-HPLC method.**

Parameter	Recommended value
Organic modifier	16% Acetonitrile
Injected sample volume	20 $\mu$ l
Buffer	(0.02M CH <sub>3</sub> COO Na)
pH	5.5
Flow rate	1.0 ml.min <sup>-1</sup>
Column temperature	30 C <sup>0</sup>
Detector	UV. Detector 220 nm

**Table (5) Analytical data for the determination of Diclofenac sodium using RP-HPLC.**

Analytical data	Value
Detection limit (D.L)	3.4 $\mu$ g .ml <sup>-1</sup>
Correlation coefficient(r)	0.9945
Linear range	(0.01-0.06) mg. ml <sup>-1</sup>
Average Recovery%	95.9
RSD%	0.72

**Fig. (12) Calibration graph for the determination of Diclofenac sodium.**

**Application:-**

The proposed method was applied to the determination of (D.S) in pharmaceutical preparation. The measured (D.S) contents are listed in table (5), this table also includes the values obtained for the analysis of the same samples by using the reference procedure described in British pharmacopoeia<sup>(1)</sup>. The values represented on table(6) reveal a good agreement between the proposed and the reference method with reasonable sensitivity and linear range (10-60) ppm. The reproducibility of the method is satisfactory, with a relative standard deviation 0.72.

**Comparison between the two methods:-**

Table(7) summarized the statistical values for FI-CL and Rp-HPLC methods. The calculated F-test is less than F-table(4.39) at 95% confidence indicating that no significant difference among Rp-HPLC ,FI-CL and B.C. methods .However the comparison

between Rp-HPLC and FI-CL methods shows that the latter method is more precise table( 8 ).

**Conclusions.****First Method FI-CL.**

A flow injection CL method for the determination of D.S has been developed utilizing the decrease of the CL intensity by (D.S). In comparison with British pharmacopoeia method the proposed method offers advantages of simplicity, rapidity, high sensitivity and low reagents consumption and provides a liner range of (1-9) $\mu\text{g. ml}^{-1}$ .

**Second Method Rp-HPLC.**

This method includes a simple and sensitive high-pressure liquid chromatographic method for the determination of Diclofenac sodium in pharmaceutical preparation. Moreover,Rp-HPLC method gives good precision (RSD%0.72%) and accuracy( Recovery % 96%) .In addition, the analysis time is much short for this method with a liner range of(10-60 )  $\mu\text{g ml}^{-1}$ .

**Table (6): Application of RP-HPLC method for the determination of (D.S) in pharmaceutical preparation.**

Sample	Recovery%		RSD%
	Proposed	Standard	
Pure Diclofenac sodium	96.0	99.0	0.72
Diclofenac sodium tablets	96.6	99.5	0.66

**Table (7): The statistical comparison results for the two methods.**

The method	Regression equation	D.L	Linearity $\mu\text{g ml}^{-1}$	r	Recovery	RSD %
FI-CL	$y=19.01x+7.02$	0.42	1-9	0.9969	98.48	0.23
Rp-HPLC	$y = 0.0002x - 2 \times 10^{-6}$	3.40	10-60	0.9945	96.6	0.72

**Table(8):F-test<sup>(16-17)</sup> between Rp-HPLC ,FI-CL and B.C. methods**

F-test between B.C. and Rp-HPLC	F-test between B.C. and FI-CL	F-test between Rp-HPLC and FI-CL	F-table At 95% confidence
0.375	3.05	9.15	4.39

## References

1. *British pharmacopoeia* on CD-ROM, 2002, **2**.
2. The *Merk Index* on CD-ROM. 12<sup>th</sup> Edition, Copyright by Merk CO. Inc., Whiteho , 2000 .
3. *British National Formulary* (BNF) No. 35, 1998 published by the British Medical Association Royal Pharmaceutical Society of Great Britain.
4. Hassan, S., S., M., Abdel Aziz,R.M, Abdel samad ,M.S.*Analyst*, (London)1994, **119(9)** (1993-1996).
5. Prado,M.S.A ,Steppe ,M andTavares,M.F.M,*J.Capillary Electrophoresis* Brazil ,1999,6(125-129).
6. Damian, P.C., Bearzotti, M.; cabezon, M.A.; olivieri , A.C., *Journal of Pharmaceutical and Biomedical Analysis*, Argentina,1999, **20(3)**, 587.
7. Liu, S.C, Tsai, T. H , *Journal of Chromatography* Taiwan,2002, **769(2)**, 351.
8. Roskar,R. ; Kmetec, V., *Journal of Chromatography*,Liabljana Slovenia, 2003, **788(1)**, 57.
9. Krzek. k, J., ; starek, M., *Journal of Chromatography and Biomedical analysis*, Polana,2002, **28(2)**, 227.
10. Mayer,B.X.;Namiranian,K,Dehganyar, P. ; *Journal of Chromatography and Biomedical analysis*, Austria, 2003, **33(4)**, 745.
11. Garcia, S., Sanchez-Pedreno, *Mikro.chimica.Acta*, Spain, 2001, **136(1-2)**, 67.
12. S.Albala-Hurtado,M.T Veciana-Nogues,Vidal.Carou and Marine-Font.; *J.Food. Sci.*, 2000, **65(6)**,1052,.
- 13..Horvanth, Melanderw C.S and I. Mdnar ; *Anal. Chem.*,1977, **49**, 142.
14. Zakana & P.R. Broun; *J. Chromato.*,255,151,1983.
15. N. Tanaku, H. Goodell and B.L. Karger; *J. Chromato*, 1978, **158**, 233,.
16. Saline , L.A., ; *Chemilinescent inhibition and activation for determination of nitrogen drugs and acid* , 1992 , M.Sc. Thesis , University of Salah Al-deen p.40-41.
17. J. Roso, *Advanced in Physicochemical Experiments*, Ellis Ho/Wood Series, London, 1964, P67.
- 18.Miller.J.C. & Miller, J.N., *Statistics for analytical chemistry*,1989, p.60.