

دراسة تأثير الفناء الداخلي في معالجة الظروف المناخية والاجتماعية للوحدات السكنية العربية

Abstract

Architectural composition has its social and environmental background and from observation the environmental natural for Arabic area that the Arabic human was and still communicating and interacting with his environment and the universe distinguishably. We can see that in any Arabic city or Islamic city specially in hot dry area include Iraq see clearly used the manner "Courtyard", this pattern is a basic nook for designing houses. The "Courtyard" is an enclosed zone from all sides and open upward to sky and specific from interior spaces. The Arabic Architectural can create a comfortable weather social and environmental. The "Courtyard" opened to be a (semi-private) space providing effective mechanisms of ventilation, lighting in the same time. The "Courtyard" survived ply with in its identity to many period beginning from Babylon period until this time, with addition some changing that made "Courtyard" more efficiency. The "Courtyard" furniture and components like "Eawan, Ursi, Badger..." are considered to be adequate and suitable for such solutions.

()

()

:

(Courtyard)

(Courtyard)

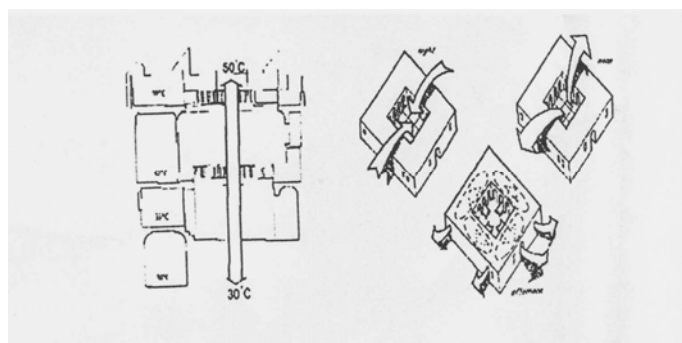
-(In Practice)

-(InTheory)

1. (climates employment of the "Courtyard").

()

(1) . (1988)



-(1)

(Herzog,2004;Moore,1998)

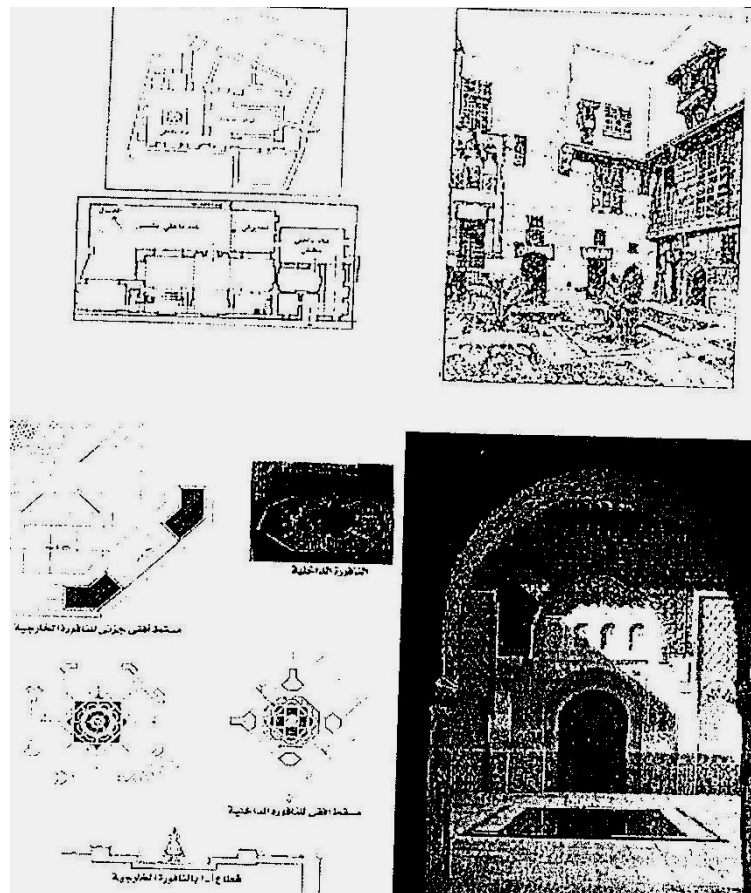
2. (Architectural furniture).

1-2

(2) (Fathy,1988,p201).

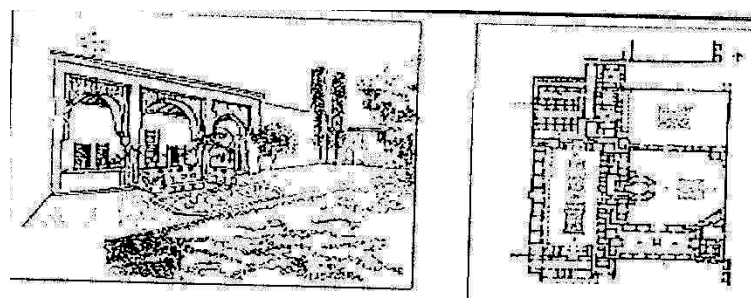
(Fathy,1988)

(3)



(Fathy,1988,p201)

(2)



(3)

2-2

() (1999).

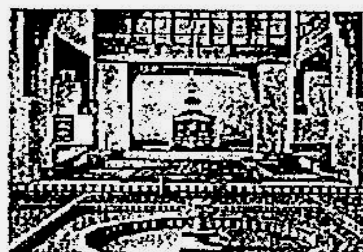
() : ()

(Slide)

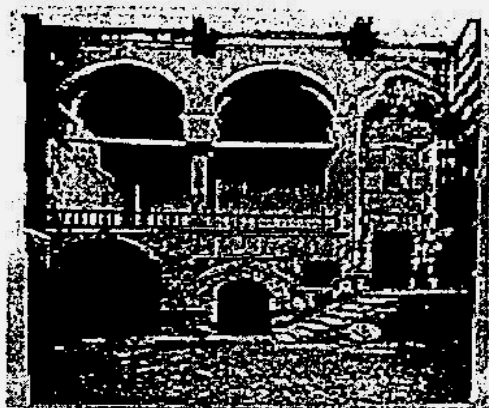
(4) (_ _ .) .



اللبان التقليدي التقليدي قنبر مع اطلالة
القرن الثامن الميلادي (سحر مكي - 1999)



بركة الماء ومنطقة الجلوس الخارجية في الأبنية التقليدية



المسجد الفضلاء الصليبي التقليدي الذي
يكنى لا يخلو بيت في القاهرة منه (بيت الكروية -
الحاج سليم لجزائر القاهرة 1540م) المتصور -
مجدى توفيق - 1999.



الأبنية التقليدي العربي، الفضلاء الصليبي
التقليدي في معظم البلدان العربية (محمد عبد العز
أبراهيم - بدون تاريخ)

(2006)

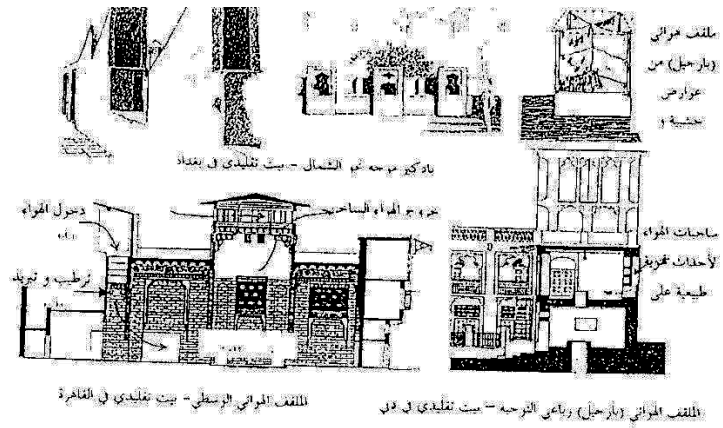
(4)

3-2

.(Fathy,1988)

()

(5) (- - .) ()



(2006)

(5)

4-2

()

()

.(1982) .

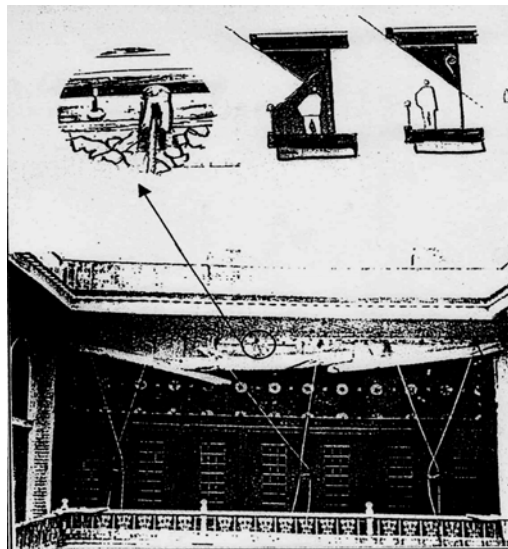
()

)

(

.(1988)

()

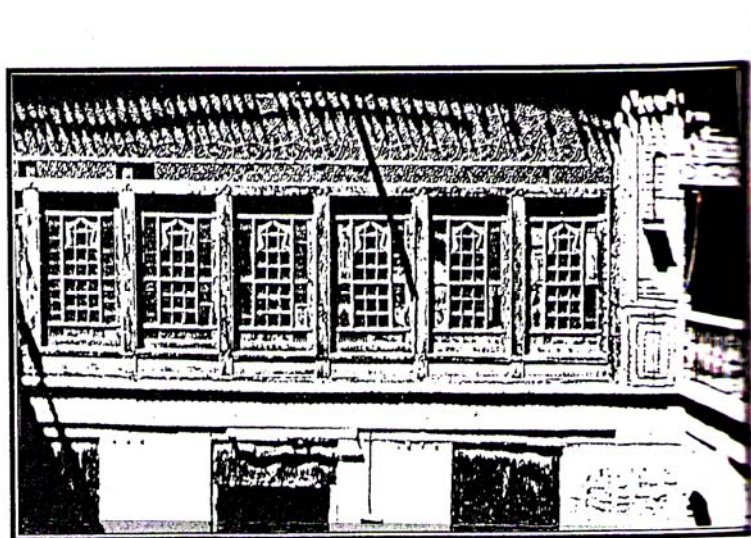
$$(6) \quad .(- \quad - \quad . \quad).$$


(1988)

(6)

(11)

(2002). (Glare)



(2002)

(11)

(Orientation).

3.

()

(London,1980).

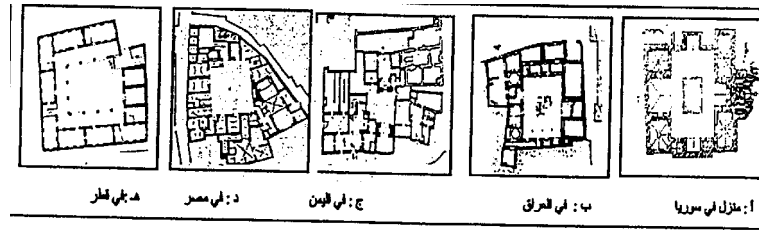
.(Shape)

4.

.(7)

.- -

.)



(2001)

(7)

.5

wall's Natural surrounding the "Courtyard" and treatment ceiling and floor

(100- 48)

()

(.London,1980)).

(Privacy). .6

(Privacy)

(Surveillance)

-)

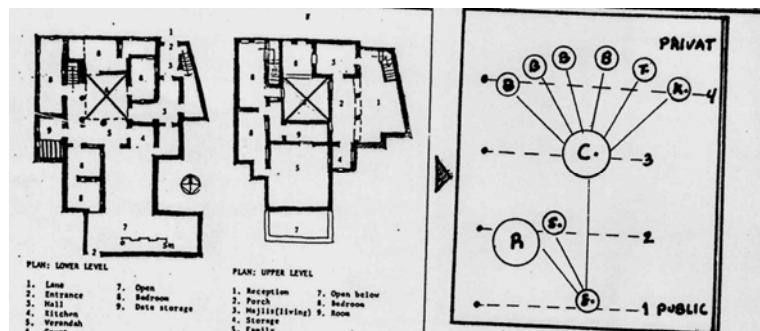
(- -

) () ()

(- - .).() (

.(Function) .7

.(8)



(E:

B:

C:

)

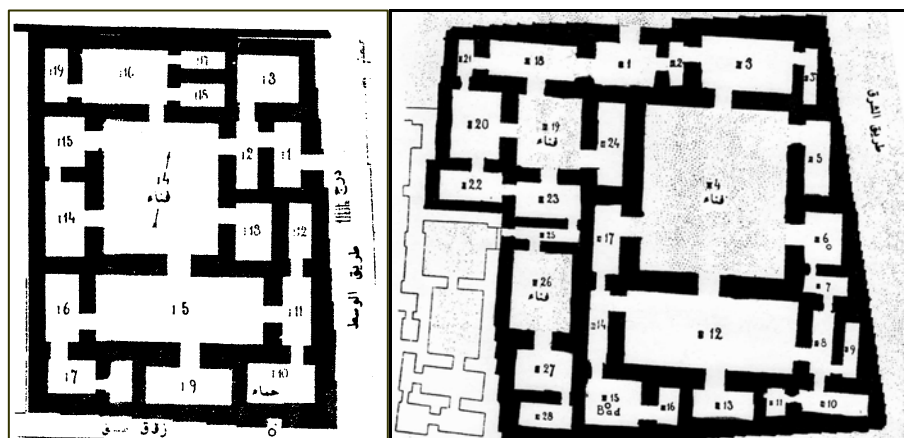
(8)

(Ekistics,V(55).op.cit.)

(The "Courtyard" history).

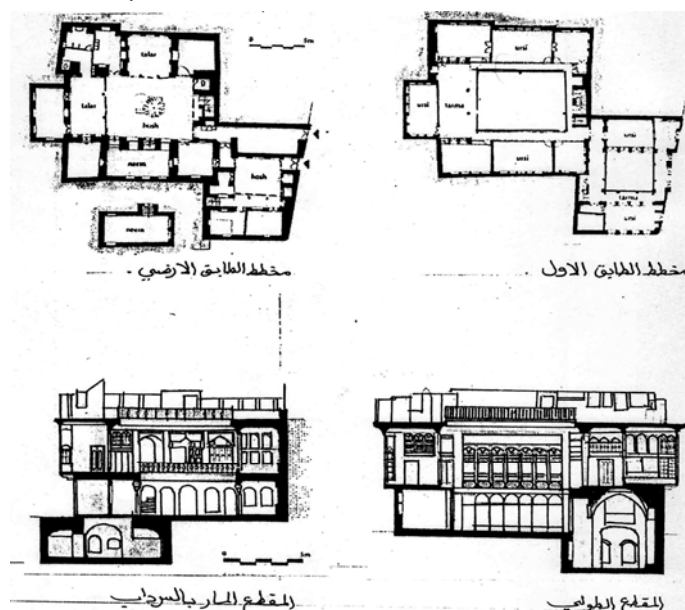
.8

(9) (10).



(-)

(9)



(Djohn,1982)()

(10)

.1

.(

.2

.3

.4

.1

.2

()

.3

(350-250) -400)

(600

.4

(

() 2006

):2001

(

) 2002

)(

(

() 1987

()

.1999

"

2006 "

1988

() 1988

1983

(.. :)

Bennadji ,Amar1999;"Adaptation Clinaatique Ou Culturelle En Zones Arides", PHd Thesis, Universite d" Aix_Mareille 1, France.

Fardeheb,F,1987.;"Classification of Passive Solar cooling Strategies in Middle East Countries", Passive Solar Journal.

Koenigsberger,O.H.1980,andothet-"ManualoftropicalHousingandBuilding"- Commonwealth Printing Press LTD-London-

Patton,Carl V.,1988"The Private Use for Public Space in Greece", EKISTICS.