

Genotyping of Human Papilloma Virus Infections and Phenotyping of Tumor Infiltrating Lymphocytes in Iraqi Patients with Uterine Cervical Neoplasia

Majid Mohammed Mahmmod Al-jewari **,Saad Hasan Mohammed Ali**, ,
Mohammed Khalifa Khudair Al-azzawi***

ABSTRACT:

BACKGROUND:

Among most basic and clinical investigations for detection and genotyping HPV, only In Situ Hybridization (ISH) is effective in studying the relation of HPV genome to that histopathological entity. Tumor Infiltrating Lymphocytes (TILs) represent the local cellular immune response against both cervical cancer and the associated HPV.

OBJECTIVE:

This study is aimed to investigate ISH in detection and genotyping of HPV and immunohistochemical (IHC) study in phenotyping of TILs in Iraqi women with different grades of cervical neoplasia.

MATERIALS AND METHODS:

This retrospective research included a total number of 129 cervical tissue blocks, 64 with invasive and 27 with pre-invasive cervical neoplasia, 12 with condylomata acuminata, 11 with chronic cervicitis and 15 with apparently healthy cervixes.

Molecular detection and genotyping of HPV DNA were performed by using ISH whereas immunophenotyping was done by IHC using monoclonal antibodies for that specific CD markers representing some of TILs.

RESULTS:

The overall prevalence of HPV DNA in total group of invasive cervical neoplasia was 28.4%, 12 out of 48 (25%) with squamous cell carcinoma (SCC) and 8 out of 16 (50%) with adenocarcinoma (AC). HPV 16 constituted (58.3%) of HPV-positive invasive cervical SCC, whereas HPV 31/33 and lastly HPV 18 constituted (25%) and (16.7%), respectively. In AC group, HPV 16, 18, 31/33 occupied 50%, 25%, 12.5% of this group, respectively.

The prevalence of HPV DNA in pre-invasive cervical neoplasia group was 22.2%. While no case with HPV 18 was detected, HPV 16 and HPV 31/33 genotypes occupied 40% and 60%, respectively.

Although CD3⁺, CD4⁺ and CD8⁺ lymphocytes showed high mean values, significant differences present only between HPV DNA-positive tissue blocks and control group ($p < 0.05$). The CD20⁺ and CD56⁺ lymphocytes showed low mean values. Compared to control group, however, statistical analysis showed significant differences ($p < 0.05$) regarding CD20⁺ and non-significant regarding CD56⁺ lymphocytes.

CONCLUSION:

Using ISH proved more powerful and sensitive tool in revealing precise effects of HPV in cervical neoplasia compared to histopathological examination. High mean values of CD4⁺ and CD8⁺ versus low mean values of CD20⁺ and CD56⁺ lymphocytes could reflect an important and specific role of these cellular responses against HPV viruses during initiation and progression of HPV-associated cervical cancers.

KEY WORDS: Human Papilloma Virus, Cervical Neoplasia, In Situ Hybridization, Tumor Infiltrating Lymphocytes, CD Markers.

* College of Science/Al-Mustansiriyah University.

* *College of Medicine/Baghdad University.

*** College of Science / Diyala University

INTRODUCTION:

The rank of cervical cancer is on the top of the 10 most common female neoplasms in developing countries where as it is the fifth in western developed nations⁽¹⁾.

On reviewing cancer situation in Iraq, it was found that it constituted 1.4% of the total number of cancers⁽²⁾.

During the past two decades, an overwhelming evidence was in favor of a causative relationship between infection with high-risk human papillomavirus (HPV) types and anogenital carcinogenesis^(3,4).

World-wide, the massive toll of papillomavirus-associated cancer was 20% of all cancer death in women⁽⁵⁾.

In addition, this virus is responsible for 500,000 new cases of cancer per year and billions of dollars in medical expenses⁽⁶⁾.

Update, more than 120 HPV genotypes have been described and of these, 30 are causally related to different anogenital tumors and carcinomas⁽⁷⁾.

For detection and typing HPV, most basic and clinical investigations use one or more of the following three nucleic acid-based tests: in situ hybridization, ISH; polymerase chain reaction, PCR; and hybrid capture system, HCS. However, only ISH is effective in studying the relation of HPV genome to that histopathological entity⁽⁸⁾.

The development of successful cancer prevention strategies is facilitated by the understanding of the etiology of the disease, knowledge of factors that contribute to the carcinogenic process, and comprehensive immunological studies⁽⁹⁾. The association between cancer and immune-suppression had long been recognized and considered to be a fundamental event related to inception of the disease. The presence of neoplasm is accompanied by distinctive alteration in the immune system, either manifestation of in situ anti-tumor response on one hand and depression of cell mediated immune function on the other⁽¹⁰⁾.

Papilloma-specific antigens in cervical carcinoma are immunosuppressive or induce very poor cellular and humoral responses. It is not understood to what extent immunological factors contribute to the viral latency and the clinical manifestations of cervical cancer. However, cigarette smoking, which is strongly associated with this disease, is associated with a decrease in cellular immunity and immunosuppressed patients are prone to develop viral genital lesions and change of cervical intraepithelial neoplasia (CIN) to cancer⁽¹¹⁾.

This research is also extended to study the tumor infiltrating lymphocytes that represent cellular

immune status of those patients by using immunohistochemical study of a relevant panel of CD markers.

MATERIALS & METHODS:

This study is designed as retrospective research, where a total number of (129) formalin-fixed, paraffin-embedded cervical tissue blocks, belonging to patients who had undergone hysterectomy or a punch biopsy from the cervix, were included in this study.

They were collected from the archives of histopathology laboratories of different general hospitals as well as many private laboratories, including Teaching Laboratories and Specialized Surgeries Hospital in Medical City, Central Public Health Laboratories, Baquba Hospital Laboratories, Al-Yarmok Teaching Hospital Laboratories, Dr. Raji al-Hadithi private lab, Dr. Loay Edwar al-Khouri private lab, Dr. Ikbāl Kobtan private lab and Dr. Nawal Alash private lab.

Among 91 cervical neoplastic tissue blocks, there were 16 invasive adenocarcinoma, 48 invasive squamous cell carcinoma, and 27 different grades of cervical intraepithelial neoplasia (recent synonymous of dysplasia). This study also included 12 cervical tissues with condylomata acuminata, 11 cervical tissues with chronic cervicitis and 15 apparently healthy cervical tissues (i.e. without any significant pathological changes), obtained from hysterectomies of patients with uterine bleeding, were included as a diseased- and normal- control groups for this study, respectively.

Molecular detection and genotyping of HPV DNA in those tissue blocks was performed by advanced and recent generation of in situ hybridization (ISH), using a specific Biotinylated DNA probes for high-risk HPV genotypes including 16, 18, 31/33, whereas phenotyping of tumor infiltrating lymphocytes was done by immunohistochemical study of a panel of CD markers including CD3, CD4, CD8, CD20, and CD56.

Methodology:

Tissue sectioning and slide preparation:

In histopathological department at Teaching laboratories, each formalin-fixed paraffin-embedded block from each cervical biopsy was subjected to cut as serial thin sections of (5µm) thickness and were stuck on charge slides.

In order to prevent carry-over DNA contaminations from one tissue sample to another, only one

disposable cutting knife, that was specified for each tissue block, was used and then each section was stuck on a single charged slide. The 1st and 2nd tissue slides were specified for haematoxyline and eosin staining whereas many subsequent 5µm thickness-paraffinized tissue sections were specified for the following procedures of in situ hybridization. As positive and negative HPV controls, it was feasible to include such tissue-containing charged slides in each test run by using cervical tissue blocks, proved by PCR to have both the cocktailed and high risk-oncogenic HPV genotypes, as a positive controls, as well as negative control tissue blocks, from those apparently healthy cervical tissues that were also proved by PCR technique to be negative for HPV.

In situ hybridization for a cocktailed - hpv genotypes:

1. Paraffin-embedded blocks of each biopsy were subjected to cut as serial thin section of thickness (5µm) and stuck on slide.
2. De waxing of paraffin by oven adjusted at 60°C for 30 minutes.
3. Slides with tissues are immersed sequentially in two changes of xylene for 5 minutes each.
4. Immersion in two changes of ethanol (99%) for one minute.
5. Immersion in three changes of ethanol (95%) for one minute.
6. Five rinses in distilled water .
7. Tissue digestion was done by immersion slides in target retrieval solution (Code No.S1699) (Dako corporation Co. Denmark) at 95-99°C for 40 minutes
8. Cooling the slide at room temperature for 20 minutes.
9. Four washes in deionized water or distilled water.
10. Immersion in target retrieval solution at 95-99°C for 40 minutes.
11. Cooling the slides at room temperature for 20 minutes.
12. Tissue rinsing by 4 washes in deionized water.
13. Immersion in 0.3% H₂O₂ in methanol for 20 minutes.
14. Tissue rinsing by 5 changes in deionized water.
15. Allowing the tissue on slide to be dried for 15 minutes.

16. Then 20µl of wide spectrum HPV probe that can be hybridized to many anogenital human papilloma viruses which include the following types: 6, 11, 16, 18, 31, 33, 35, 45, 51, and 52 (Code No. Y1404) (Dako corporation Co.,Denmark) was added to each slide.
17. Denaturation process of the HPV target DNA was done by placing the cover slipped-slide in pre-warmed oven at 92°C for 5 minutes.
18. Hybridization process is allowed to occur by transferring these slides to a pre-warmed humid chamber for hybridization to occur at 37°C for 60 minutes.
19. Removing of the cover slip is done by immersing these slides in tris-buffered saline with tween (20) (TBST) (Dako corporation Co., Denmark) at room temperature for 5 minutes.
20. Again transferring those slides to a fresh TBST bath .
21. Immersion of these slides in stringent washing solution (Code No. K0601) (Dako cytomation Co., Denmark) at 48°C for 20-40 minutes in water bath.
22. Rising the slides in 3 changes of 1X TBST PH 7.6 for 1 minute.
23. Removing of the slides from TBST and carefully wiping the excess fluid present around the section.

Detection of hybridized probe:

1. Placing the slides on a level surface and completely covering the tissues by applying enough streptavidin-conjugated with alkaline phosphatase reagent (Code No.0601) (Dako cytomation Co., Denmark) to each section.
2. Incubation of 20 minutes at room temperature was then done.
3. Pouring off the streptavidin-AP reagent (code No.K0601) (Dako cytomation Co.Denmark) from each slide and immersing the slides in fresh TBST bath for 5 minutes was followed.
4. Removing the slides from TBST and carefully wiping the excess fluid around the section.
5. Placing the slides on level surface and completely covering the tissue by applying enough of 5-bromo-4chloro-3indoyl Phosphate/ nitro blue tetrazolium substrate-chromogen solution (BCIP/ NBT) (Code No. K0601) to each section.
6. Incubating the slides at room temperature for 1 hour.

7. Pouring off the substrate solution from each slide and immersing the slides in distilled water bath for 5 minutes.
8. After that immersing the slides in nuclear fast red stain (BDH Chemical Ltd., England) for 1-5 minutes. A standardization processes were done by using 1 minute, 2 minutes, 3 minutes, 4 minutes and 5 minutes immersion time for staining slides, then we found that the excellent results were obtained with 3 minutes incubation.
9. Washing process was followed by immersing the slides for 1 minute in distilled water.

ASSESSMENT OF THE RESULTS:

Within 2 hours, the obtained result was assessed by examining the processed slides under light microscope; a deposition of an soluble blue purple product at the sites of hybridization of the probes to their targets is a positive indicator for the presence of the questioned group of HPV.

In situ hybridization of hpv genotype 16, 18, 31/33 biotinylated dna probes:

The same procedures for in situ hybridization and detection of cocktailed probes of HPV (Dakocytomation Code No. K0601) were followed except for the step of the temperature for stringent washing of these steps was 58°C for 20-40 minutes.

Determination of Lymphocytes Phenotype by IHC technique

For the determination of the phenotype of some lymphocytes, 5 monoclonal antibodies for that specified CD markers, namely CD3, CD4, CD8, CD20, and CD56, were used.

Preparation of Slides and Staining

1. Serial thin sectioning of (4 µm) thickness was done for each paraffin-embedded biopsy block.
2. Sticking of the tissues sections was done.
3. Paraffin sections were deparaffinized in oven at 60°C for 30 minutes, then allowed for cooling.
4. The slides were then passed into 3 changes of xylene for 5 minutes each.
5. placing the slides in a series of baths containing graded ethanol (100% to 80%) for 5 minutes each.
6. Transferring to distilled water bath was followed and kept for 5 minutes.
7. Washing in phosphate buffered saline, pH 7.6 for 10 minutes.

8. Enzyme digestion of the slides were done by treating with target retrieval solution (Dakocorporation Code no. 1699) at 95°C for 10-20 minutes.
9. Three serial washes were done in magnetic stirred PBS.
10. Drops of H₂O₂ 0.3% in methanol were applied on the tissue sections for 10 minutes at room temperature.
11. Diluted protein power blocking reagent, (10% in PBS) was added to tissue sections for 10 minutes at room temperature.
12. Tissue sections were treated with diluted unlabeled mouse primary antibody and incubated in moist chamber for 1 hour at room temperature.
13. The tissue sections were washed by rinsing in diluted PBS for 5 minutes.
14. Secondary antibody was applied on tissue section for 20 minutes at room temperature.
15. Tissue sections were followed by washing with diluted PBS.
16. Then, tissue sections were treated with 20% diluted streptavidin for 10 minutes at room temperature.
17. Tissue sections were treated (stained) with diluted liquid DAB for 30 minutes at room temperature.
18. Then washed with tap water.
19. Counter staining with hematoxyline/ eosin was done.
20. Washing with tap water.
21. Tissue sections were then dehydrated by a serial 80%, 90% ethanol for 5 minutes each.
22. Mounting with mounting medium and examined under light microscope.
23. Cell counting was performed by counting positively stained cells in 5 consecutive areas using a high power objective lens and ocular grid (40X).

Statistical Analysis

T test and ANOVA test, were applied to statistical examination of all results optioned in our research experiments.

RESULTS:

1 - Invasive cervical carcinoma group.

Figure 1 and 2 are showing positive- and negative-ISH reaction for cocktailed HPV DNA detection, respectively.

UTERINE CERVICAL NEOPLASIA

A– Squamous Cell Carcinoma: The total prevalence of HPV DNA in cervical squamous cell carcinoma tissue blocks was 33.3% the prevalence of HPV genotypes 16, 31/33 and 18 constituted 58.3%, 25% and 16.7%, respectively. Table 1,2 show the prevalence and genotypes of HPV in the group of cervical squamous cell carcinoma.

Table :1 Percentage of ISH detection of HPV DNA in the tissue blocks of cervical squamous cell carcinoma.

Differentiation/grades of cervical squamous cell carcinoma	No. tested	% of total	HPV DNA detection		
			State of ISH	No.	%
Well differentiation	4	8.3	Positive ISH	2	50
			Negative ISH	2	50
Moderate differentiation	27	56.3	Positive ISH	8	29.6
			Negative ISH	19	70.4
Poor differentiation	17	35.4	Positive ISH	2	11.8
			Negative ISH	15	88.2
Total	48	100	Positive ISH	12	33.3
			Negative ISH	36	66.7

Table :2 HPV - genotyping results of HPV – positive cervical squamous cell carcinoma.

Squamous cell carcinoma differentiation	No .of HPV - positive tissue blocks	Cases showed this genotype		
		HPV genotype	No.	%
Well differentiated	2	18	2	100
Moderately differentiated	8	16	5	62.5
		18+31/33	3	37.5
Poorly differentiated	2	16	2	100
Any grade	12	16	7	58.3
		18	2	16.7
		18+31/33	3	25

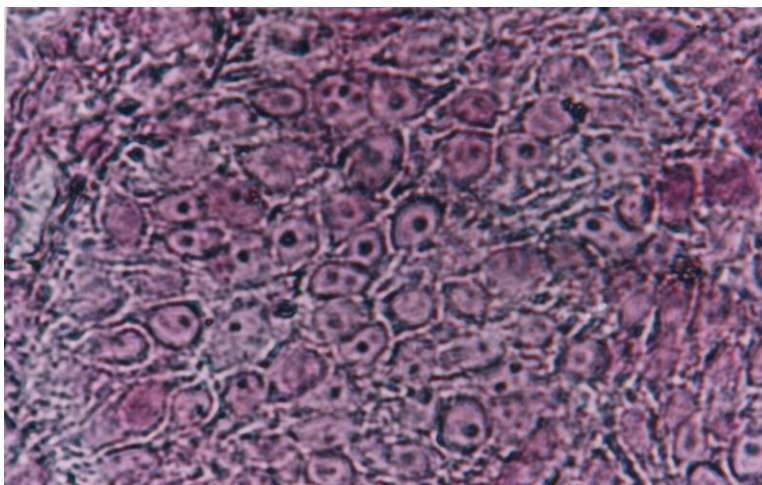


Figure 1: Invasive cervical squamous cell carcinoma showing positive ISH reaction of HPV DNA (Cocktail) using BCIP/NBT substrate/chromogen and counter stained by nuclear fast red (x200).

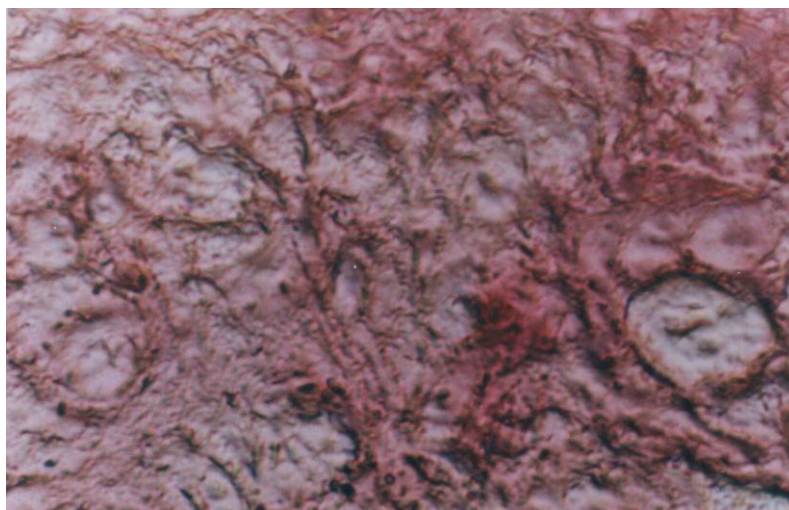


Figure 2: Invasive cervical squamous cell carcinoma showing negative ISH reaction of HPV DNA (Cocktail) using BCIP/NBT substrate/chromogen and counter stained by nuclear fast red (x200).

B- Adenocarcinoma:

The total prevalence of HPV DNA in cervical adenocarcinoma tissue blocks was 50%. The HPV genotype 16 constituted 50% , HPV 18 constituted 25% , and HPV genotype 31/33 constituted 12.5% . Multiple (mixed) infection with HPV 16 and 18

constituted 12.5% .The overall prevalence of HPV DNA in total group of invasive cervical cancer was 28.4% . Table (3 and 4) show ISH detection and genotyping of HPV DNA in tissue blocks with adenocarcinoma.

Table 3: Percentage of ISH detection of HPV DNA in tissue blocks with adenocarcinoma.

Grading / differentiation of adenocarcinoma	No.tested	%of total	HPV DNA detection		
			State of ISH	No.	%
Well differentiated	3	18.7	Positive	2	66.7
			Negative	1	33.3
Moderately differentiated	9	56.3	Positive	5	55.6
			Negative	4	44.5
Poorly differentiated	4	25	Positive	1	25
			Negative	3	75
Total	16	100	Positive	8	50
			Negative	8	50

UTERINE CERVICAL NEOPLASIA

Table :4 Genotyping of HPV DNA in HPV – positive tissue blocks with adenocarcinoma.

Adenocarcinoma differentiation / grading	HPV - positive tissue blocks	HPV genotype	No. of cases with this genotype	% of total
Well differentiation	2	18	1	50
		31/33	1	50
Moderate differentiation	5	16	3	60
		18	1	20
		16+18	1	20
Poor differentiation	1	16	1	100
Total	8	16	4	50
		18	2	25
		16+18	1	12.5
		31/33	1	12.5

2- Pre- invasive cervical neoplasia group:

The overall prevalence of HPV DNA in this group was 22.2%. The cervical neoplasia tissue blocks that were associated with koilocytosis constituted 25.9%. But the prevalence of HPV DNA detection in tissue blocks with koilocytosis was 42.8% .

The prevalence of HPV genotype 16 and 31/33 constituted 40% and 60% respectively. No HPV genotype 18 was detected in this group.

3- The control groups :

The groups of the tissue blocks that were apparently healthy and chronic cervicitis showed negative (ISH) results for HPV DNA .

4-Results of IHC for tumor infiltrating lymphocytes.

The mean values of CD3+, CD4+, CD8+, CD20+ and CD56+ T lymphocytes in HPV positive and HPV negative invasive and pre-invasive cervical neoplasia

in comparison to the control group are shown in tables 5,6,7,8,and9, respectively.

The results of CD3⁺,CD4⁺andCD8⁺lymphocytes showed high mean value in all groups and subgroups. In respect toCD3⁺lymphocytes, only there were significant differences between HPV DNA-positive and HPV DNA- negative tissue blocks in comparison with control groups. Whereas only HPV DNA-positive tissue blocks showed significant differences (p<0.05) regarding CD4⁺ and CD8⁺ lymphocytes results.

The results of CD20⁺ and CD56⁺ TILs showed low mean values in all groups and subgroups of cervical carcinoma and pre-invasive neoplasia when compared to control groups.The statistical analysis showed significant differences (p<0.05) regarding CD20⁺ lymphocytes results and non significant differences regarding CD56⁺ lymphocytes.

Table 5: Distribution of infiltrating CD3 lymphocytes in (HPV positive and negative) cervical neoplasia and condylomata acuminata in comparison to control groups (apparently healthy, chronic cervicitis)

No.	Histopathological entities	No. of cases	Mean value and SD	Statistical significance
1	HPV positive- invasive cancer	20	62.0 ± 6.5	Significant
2	HPV negative- invasive cancer	44	59.6 ± 5.5	Significant
3	HPV positive-CIN	6	66.6 ± 1.9	Significant
4	HPV negative- CIN	21	65.5 ± 1.9	Significant
5	Apparently healthy	15	37.5 ± 0.9	

UTERINE CERVICAL NEOPLASIA

Table 6: Distribution of infiltrating CD4 lymphocytes in (HPV positive and negative) cervical neoplasia and condylomata acuminata

No.	Histopathological entities	No. of cases	Mean value and SD	Statistical significance
1	HPV positive- invasive cancer	20	35.2 ± 6.0	Non-Significant
2	HPV negative- invasive cancer	44	31.8 ± 8.0	Non-Significant
3	HPV positive-CIN	6	48 ± 7.5	Significant
4	HPV negative-CIN	21	34.3 ± 5.9	Non-Significant
5	Apparently healthy	15	39.5 ± 1	

Table 7: Distribution of infiltrating CD8 lymphocytes in (HPV positive and negative) cervical neoplasia and condylomata acuminata

No.	Histopathological entities	No. of cases	Mean value and SD	Statistical significance
1	HPV positive- invasive cancer	20	31.1 ± 4.0	Significant
2	HPV negative -invasive cancer	44	31.3 ± 2.5	Non-Significant
3	HPV positive-CIN	6	31.6 ± 7.1	Significant
4	HPV negative-CIN	21	35.3 ± 6.1	Non-Significant
5	Apparently healthy	15	29.1 ± 1.0	

Table 8: Distribution of infiltrating CD20+lymphocytes in HPV- positive and -negative cervical neoplasia

No.	Histopathological Entities	No. of cases	Mean values and SD	Statistical significance
1	HPV-positive in invasive cervical carcinoma	20	8.3 ± 3.2	Non Significant..1
2	HPV-negative in invasive cervical carcinoma	44	10.5 ± 4.7	=
3	HPV- positive in pre-invasive cervical neoplasia	6	11.0 ± 4.8	Significant..2
4	HPV-negative in pre-invasive cervical neoplasia	21	13.3 ± 4.5	Non Significant
5	Healthy control	15	8.8 ± 0.7	

1.. p>0.05 2..p<0.01

Table 9: Distribution of infiltrating CD56+lymphocytes in HPV- positive and- negative cervical Neoplasia

No.	Histopathological Entities	No. of cases	Mean values and SD	Statistical significance
1	HPV-positive in invasive cervical carcinoma	20	2.6 ± 0.9	Non Significant
2	HPV-negative in invasive cervical carcinoma	44	2.4 ± 0.7	=
3	HPV- positive in pre-invasive cervical neoplasia	6	3.5 ± 0.8	=
4	HPV-negative in pre-invasive cervical neoplasia	21	3.5 ± 0.7	=
5	Healthy control	15	5.5 ± 0.7	

DISCUSSION:

1- Cervical squamous cell carcinoma .

The present results showed similar percentage of HPV detection (40%) to recent study result performed by (12) in Iraq. However the present results were also lower than world wide pervious studies that displayed a higher precentage of HPV DNA in cervical squamous cell carcinoma. In these studies, the reported prevalences were more than 95%^(13,4).

The high percentage of HPV genotype 16 among squamous cell carcinoma tissue blocks was found in the results of present study. These results are consistent with the results obtained by^(14,15).

The previous studies had shown that HPV 16 genotype can reach a much higher viral loads than other HPV genotypes and that this genotype is associated with an increased severity of underlying cervical disease^(16,17). The presence of such multiple infection with different HPV genotypes especially high oncogenic risk genotypes tends to increase the severity of the associated cervical disease⁽¹⁸⁾.

2-Cervical adenocarcinoma .

The results which were obtained from the present study are in agreement with the results (52%) obtained by⁽¹⁹⁾. Yet these results are not in agreement with previous study performed by⁽²⁰⁾.

This different appears lower than most previous studies but this could be a reflection of low prevalence of HPV in our general population . This is supported by the fact that sexual multipartners are not common in our society .

The results of present study show that high oncogenic- risk HPV genotypes (HPV 16 , 18) constitute the majority of the identified HPV .

Therefore , these HPV genotypes could play an important causal role in these cases of cervical adenocarcinoma . These results are in agrement with previous studies performed by^(19,21).

3-Pre-invasive neoplasia .

The results that are detected in present study are relatively lower than the results of many other studies , prevalence in earlier studies yielded a range of percentages from 15% to 90% HPV DNA positivity in the range of cervical lesions from minimal neoplasia (through all grades of neoplasia) to invasive cervical cancer.

This could be explained to be ralated to the difference in the sensitivity of the used HPV detecction methods as well as the difference in the

prevalence of HPV reported in their relavent populations⁽²²⁾.

The results in present study are similar to these previous studies^(23,12) and could be related to the free sexual behaviors activities of revalent populations⁽²⁴⁾. It was documented , that most HPV infection are transient and did not persist except in high-risk HPV genotypes group⁽²⁵⁾.

Our results show 2 different HPV genotypes, 16 and 31/33. The majority of HPV types observed in this study had corresponded to the well-known intermediate- and high- risk HPV genotypes (ie 31/33, 35, 56, 16 and 18). These results are in agreement with results obtained by^(12,26).

It was shown that the determination of oncogenic HPV genotypes in precancerous lesions was used as an important early marker of cancer , since each specific HPV genotype has showed differences in its association with the cervical cancer⁽²⁷⁾.

World-wide studies had shown that these HPVs are generally of a restricted high-risk group (e.g HPV 16 , 18 , 45 , and 56) among the 35 HPV genotypes commonly found in the cervical cancers . Moreover , it was reported that a lower frequent degree than high-risk group, intermediate-risk HPV group (e.g 31/33 and 35) are associated with all grades of neoplasia as well as invasive carcinoma^(28,15).

4. Immunophenotyping of Tumor Infiltrating Lymphocytes:

Host – tumor interaction is a complex relationship that has yet to be fully understood. It appears that several factors may play role in determination of this relationship, such as the microenvironment of tumor as well as type and degree of host response⁽²⁹⁾.

Cellular anti tumor effects or systems such as Tumor Infiltrating Lymphocytes (TILs) and cytotoxic T- Lymphocytes (CTL) are involved in immunoregulation and immunosurveillance mechanisms through recognition of tumor associated antigens, such as tumor transplantation antigen, after presentation with MHC molecules.⁽³⁰⁾

Tumor infiltrating lymphocytes in the cervical tissues of all studied groups of this research work were tested for the surface markers using specific monoclonal antibodies.

The results of distribution of CD3 in HPV – positive and HPV – negative subgroups of pre-invasive and invasive cervical neoplasia are in agreement with those reported by^{(31), (32), (33), (34)}.

In addition, it was revealed also that the count of CD4 – T lymphocytes was higher in HPV – positive group of invasive carcinoma than that in HPV negative counterpart.

The lower mean values of CD4 cells may be due to a suppression effect of CD8 cells population on CD4 T – lymphocytes ⁽³⁵⁾. In addition, eradication of infiltrating CD4 T – lymphocytes may reflect a suppression effect of Th1 and Th2 subsets on each other ⁽³⁰⁾.

The present study also revealed that the number of CD8 lymphocytes reduced as tumor progressed. Many studies had suggested that the CD8 lymphocytes decreased in invasive carcinoma group. The results in the present study are similar to those obtained by ^{(36),(37),(38)}.

While they reflect the same deficient immune function in cancer by itself, where they recorded low mean values in cancerous patients compared to healthy control, the non-significant differences between positive and HPV negative cervical cancer could indicate a non-important role of such cells in HPV infection..

The results of CD₂₀⁺ cells showed lower mean values in comparison to the values of CD₃⁺ T-cells. The decrease in number of CD₂₀⁺ cell may reflect loss of T-helper rather than intrinsic B-lymphocytes. The B-cells are found to be corresponding to low or normal when T-cell levels are low ⁽³⁹⁾.

The results in this study also display significant differences (P<0.05) only between pre-invasive cervical neoplasia group and control group. These results are closely similar to the results of the studies which were performed by ^{(40),(41)}. There were high significant differences (P < 0.05) between HPV positive pre-invasive cervical neoplasia and control group. These results support the results of ^{(42),(43)}. These findings reflect that humoral immune responses were locally higher in HPV infection of cervical neoplasia.

The results showed that cells expressing CD₅₆⁺ in HPV positive and HPV negative infected cervical lesions are in general of lower mean values when they are compared with their healthy control group. Interestingly the present results indicate that the mean values of CD₅₆⁺ cells are decreasing with the progression of cervical neoplasia. NK cells have the

ability to kill any cell that express low levels of class I MHC antigen. Tumor cells overcome this potential ability for lyses by expressing of just those specific MHC antigen that can engage inhibitory receptors, which can prevent NK-cells activation ^{(32),(44)}.

CONCLUSION:

The low prevalence of HPV DNA in invasive cervical carcinoma group of this study could be , in part , attributed to low prevalence of HPV infection in general population. Using ISH technique for detection of HPV is more powerful and sensitive tool in revealing the precised effects of HPV in cervical neoplasia when compared to histopathological examination.

High mean values of CD4+ and CD8+ versus low mean values of CD20+ and CD56+ lymphocytes could reflect an important and specific role of these cellular responses against HPV viruses during initiation and progression of HPV-associated cervical cancers.

REFERENCES:

1. Jones BA ,Davey DD. Quality management in gynecologic cytology using inter- laboratory comparison. Arch Pathol Lab Med. 2003;124,672.
2. Iraqi Cancer Board. The results of Iraqi cancer registry for the years 1995-1997. Ministry of Health (editor) . Baghdad ,Iraq. 1999,11-13, 32-39, 58.
3. Goldie S, Kuhn I, Denny I, pollack A . Policy analysis of cervical cancer screening strategies in low-resource seting : clincical benefits and cost effectiveness. JAMA . 2001; 285:3107.
4. Bohmer g, van den brute aj, brummer. No confirmed case of human papillomavirus DNA-negative cervical intraepithelial neoplasia grade 3 or invasive primary cancer of the uterine cervix among 511 patients . Am J Obstet Gynecol .2003, 189:118.
5. Kaufman R.H., Adam E, Kenogle J, and Reeves W.C. Human papillomvirus testing as triage for atypical squamous and low grade squamous intaepithelial lesions: sensitivity , specificity , and cost –effectiveness. AM J Obstet Gynecol. 1997; 177 , 930-936.
6. Munoz N , Franceschi S, Bosetti C. Role of parity and human papillomavirus in cervical cancer : The IARC multicenteric case-control study. Lancet. 2002;359,1093.

7. Herrington, C.S.; Graham, D. Southern, S.A.; Bramdev, A.; and Chetty R. Loss of Retinoblastoma protein expression is frequent in small cell neuroendocrine carcinoma of the cervix and is unrelated to HPV type. *Hum. Pathol.* 1999;338, 423 – 428.
8. Wick, MJ. Diagnosis of Human Papilloma Virus gunecologic infections, *Din lab Med.* 2000; 20,271.
9. Nebesio, CL, Mirowski, GW, Chuang, TY. Human papillomavirus: clinical significance and malignant V potential, *int J Dermatol* 2001; 40,373.
10. Ahdieh, L, Munoz, A, vlahov, D, Cervical neoplasia and repeated positivity of human papillomavirus infection in human immunodeficiency virus-seropositive and -seronegative women. *Am G. Epidemiol* 2000; 151,1148.
11. Levinson, W. and Jawetz, E. *Medical microbiology and immunology* sixth edition 2000.
12. MohammedAli S.H. *Molecular-Biological Studies of Human papillomavirus infections in patients with cervical neoplasia.* Medical College , Al-Nahrain University, 2001.
13. Alani RM , Munger K; Human papillomaviruses and associated malignancies.*G Clin Oncol* .1998;16,330.
14. Clifford GM, Smith JS, Aguado T, Francesci S. Comparison of HPV types distribution in high – grade cervical lesions and cervical cancer . *Br J Cancer.* 2003; 89 :10.
15. Eileen M bural Human papillomavirus and cervical cancer January 2003 P.I-17;16.
16. Swan D.C , Tucker G , Torolero-Luna M.F , Mitchell L.J.P. Human papillomavirus (HPV) DNA copy number is dependant on grade of cervical disease and HPV type. *J Clin Microbiol* .1999; 37 :1030-1034.
17. Zerbini M.S, Venturoli M, Cricca G, Gallinella P, De Simone S , Costa D, Sentini J, and Musiani M . Distribution and viral load of type specific HPV in different cervical lesions as detected by PCR-ELISA. *J Clin Pathel* .2001; 54 , 377-380.
18. Gillet E.M. DNA marker concepts and characteristic marker index. *HtmI.* 2001, 1-9 .
19. Lizano M. Berumen J, Giud M.C, Casas L, and Garcia-carranco A.: Association between human papillomavirus types 18 variants and histopathology of cervical cancer .1997; 89,1227-1230.
20. Chichareon S, Herrero R, Munoz N. Risk factors for cervical cancer in Thailand: A case-control study . *J Natl Cancer Inst.* 1998; 90,50.
21. Harro C.d. ,Y-S Pang , R.B.S Ronden , Hildesheim Z, Wang Z, M.J Karron, J Dillner, J.T Schiller, and D.R. Lowy. Safety and Immunogenicity trial in adult volunteers of human papillomavirus 16 LI- virus like particle vaccine .*J Natl cancer Inst.* 2001; 93,284-292.
22. Wallin KL, Wiklund F, Aongstron T .Type-specific persistence of human papillomavirus DNA before the development of invasive cervical cancer . *N Engl J Med.* 1999; 341 ,1933.
23. Al-Khafaji,A-K The prevalence of Koilocytosis in cervical scrapes from patients with different cervical lesions .The Conference of Ministry of Health on the early diagnosis of cervical cancers. 2000; 9-12 April.
24. Shepherd J, Weston R , Peersman G , Napuli IZ. Interventions for encouraging sexual lifestyles and behaviors intended to prevent cervical cancer .*Cochrane database svst Rev* .2000 ;CD 001035.
25. Bory Jp , Cucherousset J , Lorenzato M . Recurrent human papillomavirus infection detected with the hybrid capture II assay selects women with normal cervical smears at risk for developing high grade cervical lesions: A longitudinal study of 3091 women. *Int J Cancer.* 2002; 102 : 519.
26. Kjaer SK ,Van den Brule AJ , Poull G .Type specific persistence of High risk human papillomavirus (HPV) as indicator of high grade cervical squamous intraepithelial lesions in young women popluation based prospective.
27. Zur Hausen H. Papillomaviruses and cancer : from basic studies to clinical application .*Nat Rev Cancer.* 2002;20,242-350.
28. Ries,L.A.G.M.P.EisnerC.L.Kosary,B.F.Hankey, B.A.Miller,L Glogg, and B.K.Edwards.SEER cancer ststistics review 1973-1998.
29. Alexandroff AB. Robins RA. Murray A.James K Tumour immunology:false hopes-new horizons *Immunol Today* 1999; 19,247.

30. Merogi, A. J. Tumor host interaction: analysis of cytokines, growth factor, and tumor infiltrating lymphocytes in ovarian carcinoma, *Hum. Pathol.* 1997; 28, 321-331.
31. Wood worth,C.D; Simpson,S .Comparative lymphokine secretion by cultured normal human cervical keratinocytes papillomavirus-immortalized and carcinoma cell lines.1993; 142, 1544-55
32. Keating PJ, Crommer FV, Dnggan –Keen M, et al., Frequency of down –regulation of individual HLA-A and Balleles in cervica carcinoma in relation to TAP-I expression .*Br J. Cancer* 1995;72,405-11.
33. AL-Saleh, Giannini,W. S.L.;Jacobs,N;Moutschen,M.;Dayen, Boniver, J.;Deluene, P. Correlation of T-helper secretoy differentiation and types of antigen presenting cells in squamous intraepithelial lesions of the uterine cervix. *J Pathol* 1998; 184,283-90 .
34. Seymour, K. Selection of metastatic tumor phenotypes by host immune system.*Lancet*1999;354,1989-91 .
35. Moore, K.W.A.;and O'Garra, R. Interleukin-10. *Ann. Rev. Immunol.* 1993; 11, 165-190.
36. Torres-JM; Cabrera-T;Concha-A;Oliva-MR;Ruiz-Cabello-F; Garrido-F HLA class I expression and HPV-16 sequences in premalignant and malignant lesions of the cervix.1993; 41, 65-71 cells in squamous intraepithelial lesions of the uterine cervix
37. Rank RG, Bowlin AK, Kelly KA. Characterization of lymphocyte response in the female genita tract during ascending Chlamydial genital infection in the guinea pig mobil. *Infect Immun* 2000; 68,5293-8 .
38. Eiben GL, Velders MP, Kast WM . The cell-mediated immune response to human papilloma virus-induced cervical cancer :implications for immunotherapy . *Adv Cancer Res* 2002; 86:113-48 .
39. Morelli-AE;Sananes-C;Di-Paola-G;Paredes-A;Fainboim-L elationship between types of human papillomavirus and Langerhans` cells in cervical condyloma and intraepitheial neoplasia. *Am-J-Clin-Pathol.* 1993; 99,200-6.
40. Catherine, S., Principles and laboraty diagnosis , clinical mmunology Lippincott.1989.
41. Jenson-AB;Kurman-RJ; ancaste-WD.Tissue effects of and host response to human papillomavirus infection 1991;9,203-9 *Dermatol-Clin.*
42. Wood, G.W., and Gollahon :Detection and quantitations of macrophage infiltration in primary human tumors with the use of cell – surface markers. *J Nat .Cancer Inst.* 1988; 59,1081-1087 .
43. Roche-JK; Crum-CP,Local immunity and the uterine cervix: impiications for cancer-associated viruses. *Cancer-Immunol*-1991; 33,203-9 .
44. Bontkes, H.J.;de-Gruijl, T.D.; Walboomers,J.M.;Van-den Muysenbery, A.J.;Gunther, A.W.;Schepner,A.J.;Meijer C.J.; and Kummer , J.A.; Assessment of cytotoxic.T Lymphocyte phenotype using the specific markers granzyme B and tIA-1 in cervical neoplastic lesions .*Br J Cancer.* 1997; 76, 1353-60.