

MICROFOSSIL ASSEMBLAGES AND DIAGENESIS OF BALAMBO FORMATION FROM AZMER MOUNTAIN IN NORTHEAST SULAIMANIYAH, KURDISTAN REGION, IRAQ

Hyam S. Daoud^{*}, Ramona Balc^{**} and Ghafor H. Sur^{***}

Received: 15/ 6/ 2009, Accepted: 1/ 4/ 2010

Key words: Calcareous nannofossils, Diagenesis, Balambo Formation, Upper Barremian, Azmer Mountain, Kurdistan Region, Iraq.

ABSTRACT

A detailed Lower Cretaceous section of Balambo Formation, which is exposed in the Azmer Mountain, northeast of Sulaimaniyah city (Kurdistan, Iraq) has been investigated. Eighty four limestone samples have been studied for microfacies analyses and 52 clay and marl samples were investigated for calcareous nannofossils determinations.

Most of the rocks consist of two main types of facies: Wackestone and packstone with radiolaria. The main diagenetic processes are represented by dissolution, calcitization, dolomitization, stylolitization, silicification and cementation.

The calcareous nannofossils from Balambo Formation were studied for the first time from the study area. Based on the identified calcareous nannofossil assemblages, the studied rocks were assigned to the Upper Barremian. The calcareous nannofossil assemblages are dominated by *Micrantolithus*, *Nannoconus* and *Rhagodiscus* spp.

المتحجرات الدقيقة والعمليات التحويرية لتكوين بالامبو في جبل أزمر، شمال شرق السليمانية، كردستان، العراق

هيام صالح داود، رامونا بالك و غفور حمة سور

المستخلص

تمت دراسة مقطع من الكريتاسي الأسفل لتكوين بالامبو في منطقة جبل أزمر، شمال شرق مدينة السليمانية (كردستان، العراق). أجريت هذه الدراسة على 84 نموذج من الحجر الكلسي لدراسة السحنات المجهرية و 52 نموذج لدراسة الـ nannofossils الكلسي. المقطع يتكون في أغلبه من نوعين رئيسيين من السحنات: واكستون وباكستون الغنيتين بالراديو لاريا. ان العمليات التحويرية التي تم تحديدها تتمثل بالذوبان تحت الضغط والدلمة تحت شروط الدفن التدريجي. ان دراسة الـ nannofossils الكلسي هي الأولى من نوعها التي تم تحديدها في تكوين بالامبو في جبل أزمر. بالاستناد على تجمع الـ nannofossils الكلسي الذي تم تحديده فان هذه التوضعات تعود إلى عصر البارميان العلوي. ان تجمع الـ nannofossils الكلسي غالبية من الأنواع *Micrantolithus*، *Nannoconus* و *Rhagodiscus* spp.

^{*} Lecturer, Sulaimaniyah University, College of Engineering, e-mail: dhyam12@yahoo.com

^{**} Lecturer, College of Environmental Science, Babeş-Bolyai University, Cluj-Napoca, 400294, Romania, e-mail: ramonabalc@bioge.ubbcluj.ro

^{***} Lecturer, Sulaimaniyah University, College of Sciences, Department of Geology

INTRODUCTION

The Balambo Formation was first described by Wetzel (1947) in Bellen *et al.* (1959) from the Sirwan Valley near Halabja, NE Iraq. The age of this formation is Valanginian – Turonian (Buday, 1980). It was divided into two units: Lower Balambo Formation (Valanginian – Albian) and Upper Balambo Formation (Cenomanian – Turonian) (Buday, 1980).

Throughout the type locality, which is in the proximity of Halabja town (southern part of Balambo Mountains, in Sirwan Valley), the lower part of Balambo Formation comprises 280 m (Buday, 1980). It consists of thin layered bluish ammonites-rich limestone, with interlayers of marls and clays, with beds of olive green marl and dark blue shale, followed by radiolarian-rich limestone (Bellen *et al.*, 1959).

Bellen *et al.* (1959) and Buday (1980) divided the Hauterivian – Valanginian part of the Balambo Formation into three faunal zones, from the bottom upwards, these comprise:

— **Crioceras Zone** with: *Crioceras plicatilis*, *C. raricostatum*, *Neocomites houdardi*, *Olcosteohanus* sp., *Bochianites neocomiensis*, *Kilianella bochianensis*, *K. ischnotera*, *Neocosmoceras* cf. *sayni*.

— **Hoplites Zone** with: *Crioceras plicatilis*, *Crioceras* sp., *Neocomites houdardi*, *Olcosteophanus* sp., *Distoceras* sp., *Acanthodiscus* sp., *Thurmannites* sp., *Holcodiscus* sp. and *Hoplites karakash*.

— **Duvalia Zone** with: *Hibolites* sp., *Phylloceras tethys* and *Radiolaria*.

The Barremian – Aptian part of the formation, in the High Folded Zone contains *Radiolaria* and *Pseudohoploceras* sp. (Buday, 1980).

The lower part of the Balambo Formation is deposited in deep bathyal environment the lower contact of the formation in the type section seems to be non sequential, without visible unconformity. The basal Valanginian and the Berriasian are missing here (Buday, 1980). The continuous sedimentation is evident in all areas where the Balambo Formation forms tongues within the Lower Sarmord and/ or Lower Qamchuqa formations, and the upper boundary of the Lower Balambo Formation is always gradational and conformable.

The upper part of Balambo Formation is homogeneous and consists of thin bedded globigerinal limestone, passing down into radiolarian limestone (Bellen *et al.*, 1959). Throughout the type area, it comprises mostly of thinly bedded (rarely thickly bedded), light colored limestone with a pelagic globigerinal – radiolarian – oligosteginal assemblages. The Cenomanian part of the formation in the type area is (170 – 200) m thick and the Turonian part is (315 – 350) m thick (Bellen *et al.* 1959 and Buday, 1980). The upper part of Balambo Formation was deposited in an outer shelf to bathyal environment, relatively deep basin situated along the NE boundary of the Arabian Plate (Buday, 1980). Bellen *et al.* (1959) listed abundant fauna in the upper part of Balambo Formation of Cenomanian – Turonian age.

The lowermost beds of the upper part of Balambo Formation comprise grey globigerinal limestone of Albian age, which conformably overly blue ammonite-bearing limestone of the upper part of the Lower Balambo Formation. The upper part of Balambo Formation crops out extensively in the Imbricated Zone of NE Iraq (Jassim and Buday in Jassim and Goff, 2006). Based on the identified planktonic foraminifera in the Balambo Formation from Azmer Mountain, Ghafor (1993) defined three zones: *Hedbergella washitensis* Zone (lowermost), *Rotalipora appenninica* Zone, and *Marginotruncana helvetica* Zone (uppermost). He claimed an Albian – Turonian age for the formation. The depocentre extends into SW Iran, where it is referred to as the "Massive Limestone Group" (Kent *et al.*, 1951). In North Iraq, the Balambo – Tanjero Zone is either overthrust by the Northern Thrust Zone or completely missing. In this region, neretic limestones of the Herki, Rikan and Zibar areas (Hall, 1957) replace the Balambo Formation.

GEOLOGICAL SETTING

The studied area is located in the Zagros Fold – Thrust Belt from Kurdistan Region, Northeastern Iraq. According to Buday and Jassim (1987), the studied section is located within the High Folded Zones, while Jassim and Goff (2006) included it in the Balambo – Tanjero Zone. It is situated about 8 Km to the northeast of Sulaimaniyah City, near Qula Rash village on the northeastern side of the Azmer Mountain (Fig.1). The mountain consists of asymmetrical large anticline, which includes many smaller folds forming anticlinorium.

Field observation showed that the southwestern limb of the anticline is steeper, which in some places form recumbent folds. The core of the anticline is exposed in the deep valleys such as Qaywan and Khamza valleys and the core consists of Balambo Formation, which is sampled and studied in this paper. This formation consists of centimetric to 0.7 m thick layers of limestones, which are rich in radiolaria and some planktonic foraminifera. Some of the limestone layers are silicified and contain siliceous nodules. Between the limestone layers, greenish marls and bluish-grayish calcareous shale occur (Figs.2 and 3). The section is almost 150 m thick, including the areas covered by soil (Figs.4 and 5). The beds are highly deformed and generally dipping about 74° NE, with strike of about N55° W. The Balambo Formation is overlain by Kometan Formation (Turonian – Lower Campanian), which according to Bellen *et al.* (1959) and Buday (1980) consists of white, well bedded and fine grained pelagic limestone with planktonic foraminifera. Followed by the Shiranish and Tanjero formations, which are composed of marly limestone (hemipelagite) and clastic sediments (sandstone and calcareous shale), respectively as indicated on the geological map of Iraq (Sissakian, 2000).

MATERIALS AND METHODS

Fieldwork including direct outcrop observation and sampling of each individual layer was performed. The profile drawn in the field was subsequently modified according to the microscopic information, thus the final profile have been obtained (Fig.5).

The laboratory preparation included in obtaining one or more thin sections from each sample. The microscopic study of thin sections (binocular and polarized microscopes) was performed, in order to identify and describe the carbonate microfacies and microfossils. The qualitative microfacies analysis was based on the methodology elaborated by Dunham (1962) and modified by Embry and Klovan (1971).

Samples investigated for calcareous nannofossils were prepared using the standard smear slide technique for light microscope (LM) observation. The investigations were carried out under a light microscope (Axiolab Zeiss) at a magnification of 1000x using parallel and crossed nicols. For biostratigraphic purposes, the standard nanno-plankton CC zones by Sissingh (1977) and Perch-Nielsen (1985) were used.

RESULTS

▪ Microfacies

Two main types of Microfacies have been identified in the studied section:

– **Pelagic Radiolarian Wackestone** with (10 – 25) % radiolarians (*Spumellaria* and *Nassellaria*) (Fig.6.1, 6.2, 6.3 and 6.4). The components are composed mostly of radiolaria, spicules and calcified spines of radiolarian, besides planktonic foraminifera. The radiolarian tests were almost fully replaced by calcite and in some cases they were only partly preserved (Fig.6.2 and 6.3). The studied section consists mostly of this facies, especially in the middle part and it intercalates with pelagic radiolarian packstone towards the upper part of the section. Such facies is widespread, in carbonate deposits formed in bathyal environments (Flügel, 2004).

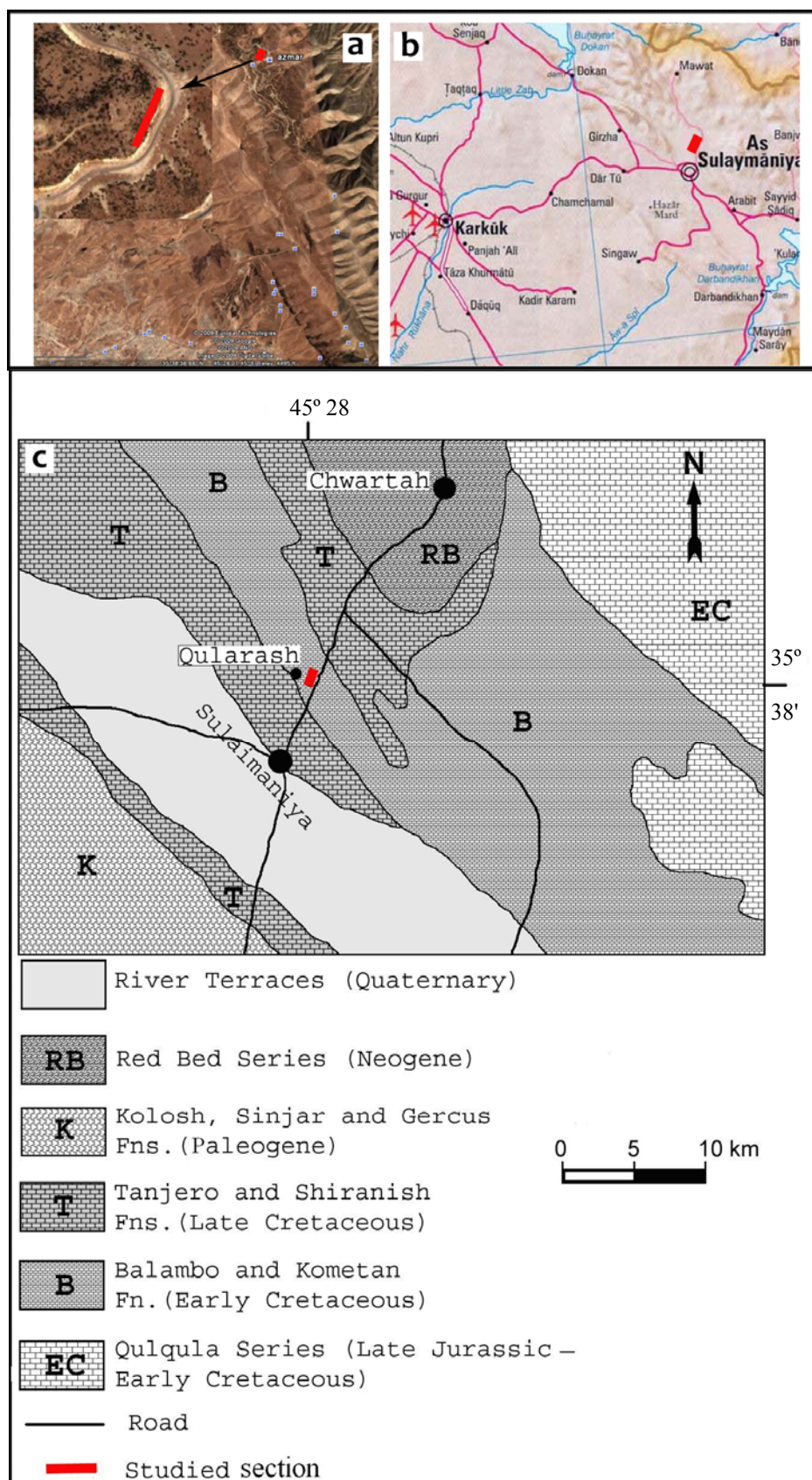


Fig.1: Location map of the studied section: **a)** Google Earth image, **b)** Location map, **c)** Geological map of Iraq (from Sissakian, 2000)



Fig.2: Limestone beds with interlayers of marl and claystone in the studied section



Fig.3: Silicified limestone beds in the upper part of the studied section



Fig.4: Location of the studied section within Balambo Formation in Azmer Mountain

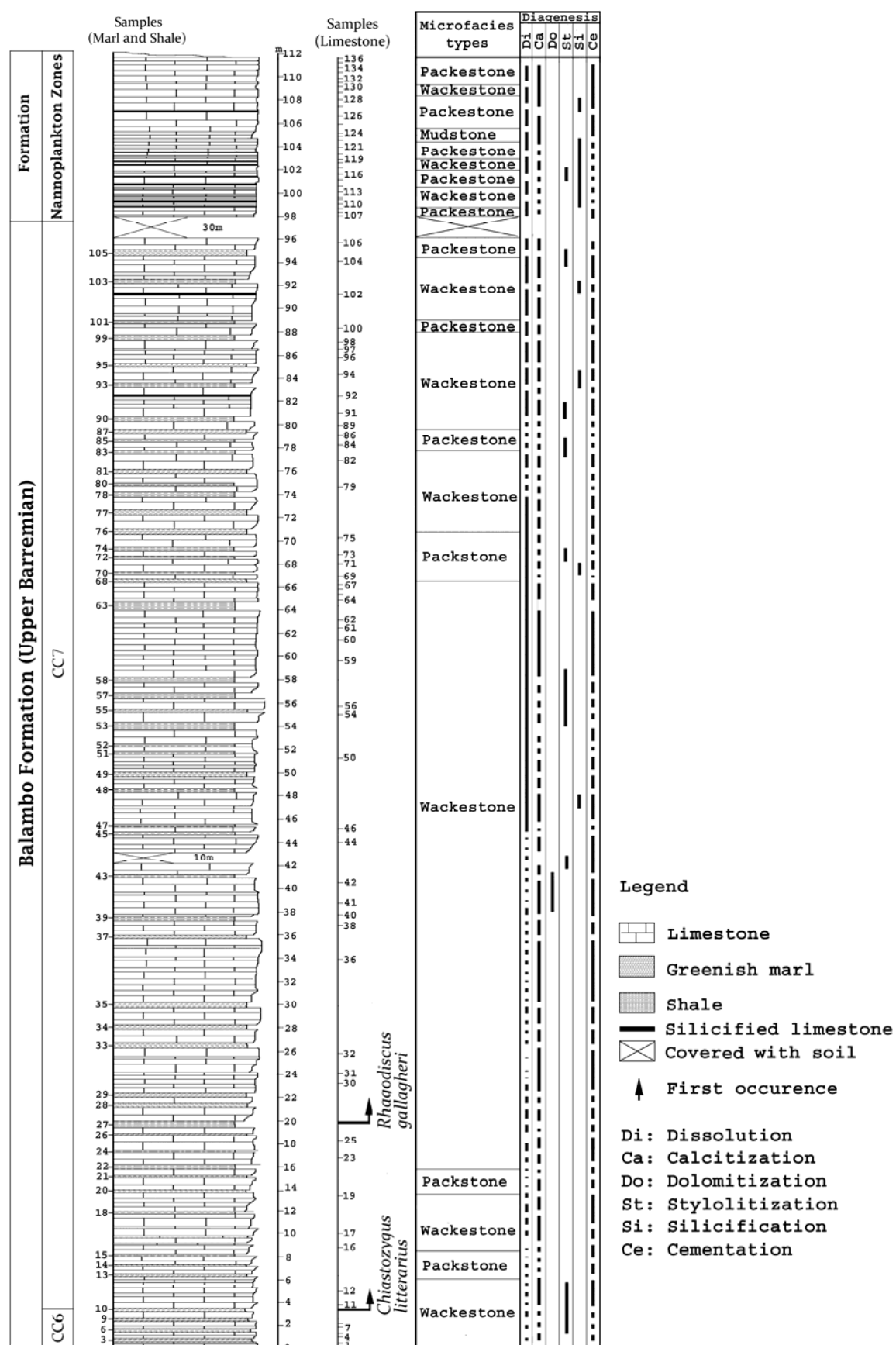


Fig.5: Lithological column of the Balambo Formation, in the studied section

Radiolarians are exclusively marine planktonic unicellular organisms consist of siliceous (opaline) skeletons with sizes less than 2 mm, usually range between (100 – 250) μm . They populate in open marine environments; in the present day oceans, and can be found at depths ranging from 100 m to more than 4000 m (Flügel, 2004). Fossil radiolarians were found in basinal pelagic limestones (Kuhry *et al.*, 1976), but also in shallower sediments. Radiolarians were identified in deposits as old as the Cambrian and are used as long term biostratigraphical markers, especially in Mesozoic and Cenozoic deposits (Kling, 1978). Various groups of Spumellaria and Nassellaria represent the Mesozoic and Cenozoic radiolarians; the radiolarians have diversified at the end of Jurassic.

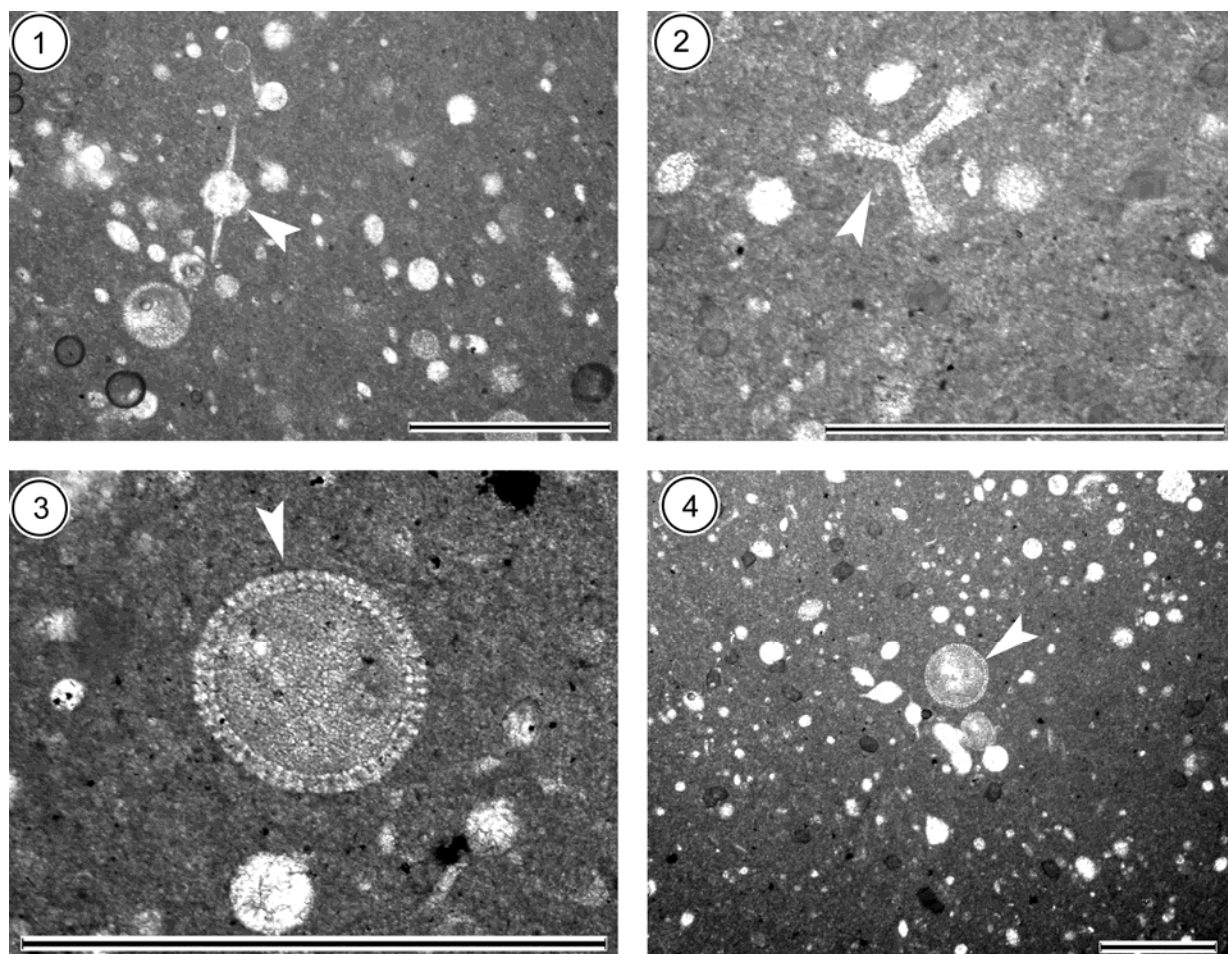


Fig.6:1 and 2) Pelagic radiolarian wackestone. Nassellarian radiolarian indicated by arrow. The radiolarian skeleton is replaced by calcite, but its original morphology is still preserved (Samples 11 and 16). 3 and 4) Spumellarian radiolarian, indicated by arrow. The original silica has been replaced by equigranular fine calcite (Sample 19).

Note: The bar scale is 1mm

– **Pelagic Radiolarian Packstone** with large amounts of radiolarians (up to 60% of the rock volume), consist of radiolaria, spicules and calcified spines of radiolarian and planktonic foraminifera (Fig.7.1, 7.2 and 7.3). In the upper part of the studied section, laminated mudstones with traces of reddish Fe-oxides were also identified. This facies consists predominantly of micrite and its thickness does not exceed more than 0.6 m (Fig.8).

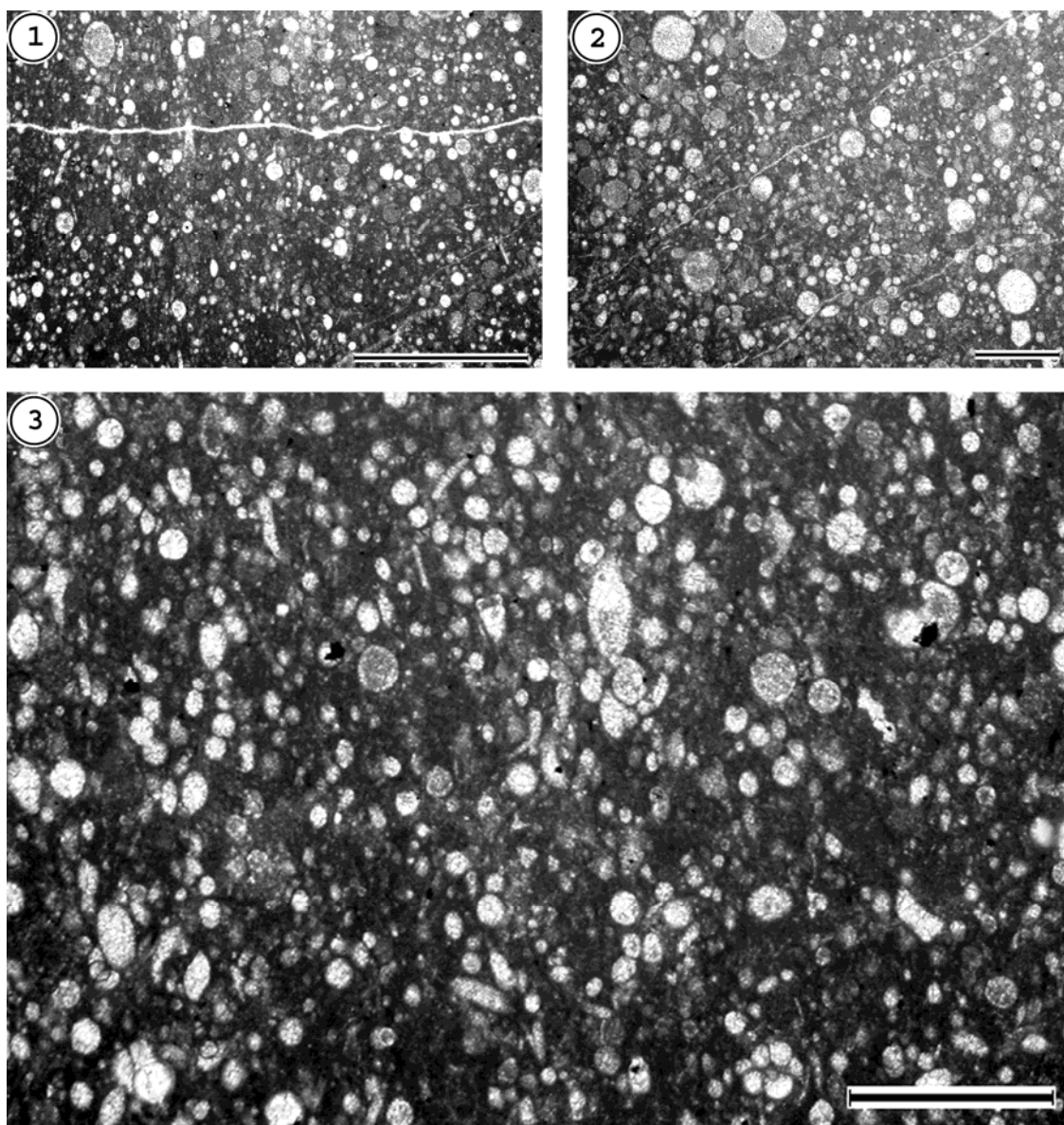


Fig.7: 1, 2 and 3) Pelagic radiolarian packstone. Calcitized Spumellarian radiolarians are recorded by circular sections of different sizes (Samples 69, 73, 75)

Note: The bar scale is 1mm

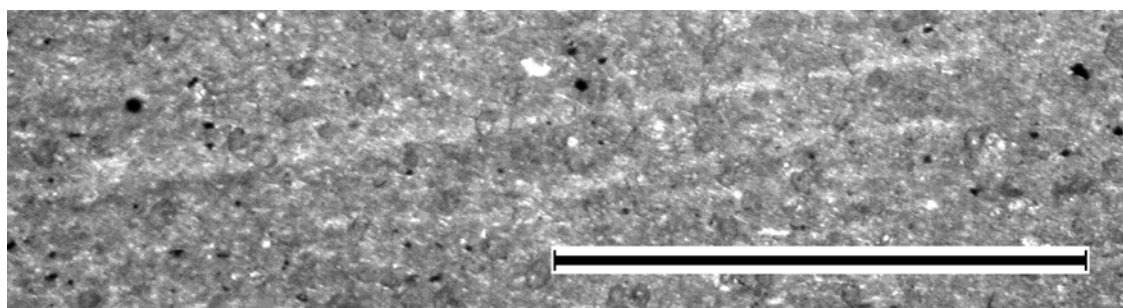


Fig.8: Fine laminated mudstone with traces of Fe-oxides (Sample 124)

Note: The bar scale is 1 mm

▪ Diagenetic Processes

– **Dissolution:** The dissolution of the radiolarian tests took place in immersed conditions, at or below the sediment – water interface. The process was controlled by the silica saturation of the pore fluids, by the intensity of the bioturbation and by the sedimentation rate (Flügel, 2004). A high sedimentation rate leads to a good preservation of the radiolarian tests (Flügel, 2004). The transformation of the radiolarian tests under burial conditions is much faster within limestones, as compared to claystones, but the test's preservation status is poorer in limestones, as compared to siliceous rocks (Kiessling, 1996). In the lower and middle parts of the studied section, the tests of radiolarian are well preserved because they were slightly affected by the dissolution processes (Fig.6). Towards the upper part of the section, the dissolution become more influent and leads to poorly preservation of radiolarian tests (Fig.10).

– **Calcitization:** The calcitization of radiolarians is a common process in limestones. It starts during the early diagenetic stage, and continues during the shallow to deep burial stages. The radiolarian tests are replaced by calcite, and sometimes might be misinterpreted as calcispheres. However, the peripheral zone of the radiolarian tests shows an irregular, interlocked pattern, while the calcispheres show smooth contours. In some samples of the studied section, the radiolarian tests are replaced by calcite, but they have still preserved their original morphology (Fig.6.3). In other samples, especially in the upper part of the studied section, the skeletons of the radiolaria are completely replaced by calcite and only their ghosts can be seen (Fig.10).

– **Dolomitization:** The dolomitization is represented by equigranular, anhedral crystals of dolomite (Fig.9.1 and 9.2). This process was observed only in one level of a thickness of 3 m; between (38 – 41) m of the studied section. The observed crystals of the dolomite in thin sections are represented by equigranular, anhedral crystals, tightly packed anhedral and subhedral crystals, intercrystalline boundaries lobate and straight, some crystal face junctions are preserved, and grain size between (0.1 – 0.3) mm. These fine crystalline mosaic dolomites were formed by replacement of crystalline calcite matrix. Such crystals suggest that dolomitization took place at a relatively low temperature and occurred at a relatively early stage of diagenesis (Sibley and Gregg, 1987). The need for the diagenetic fluids to move freely to dolomitize such limestones, may necessitate relatively early dolomitization, when the rock was more porous and sufficiently permeable (Mresah, 1998). However, the dolomitization is a secondary diagenetic process that may take place during any of the diagenetic stages that affected the sediment (Purdy, 1968 and Septfontaine, 1976).

– **Stylolitization:** It is resulted by dissolution under pressure, pointing to progressive burial diagenesis (Simpson, 1990 and Flügel, 2004) that resulted in the lithification and consolidation of the sediments. Most often, the stylolites formed after the first cementation stage and contributed to additional lithification of the sediment due to the CaCO_3 released by dissolution under pressure (Bathurst, 1975). The stylolites are composed of same material as the rock of which they are part, and are better developed in limestones and dolomites than in any other kinds of rocks (Mitsui, 1967). According to their morphology (Choquette and James, 1987), two types of stylolites were identified in the studied section; a sutured with small amplitude (Fig.10.1), and sutured with high amplitude (Fig.10.2 and 10.3). These types of stylolites usually form in limestones with low amount of insoluble residual material and are the result of overburden pressure (Bathurst, 1975). Stylolites serve as permeability barriers and they have a considerable effect on later diagenetic processes, such as dolomitization.

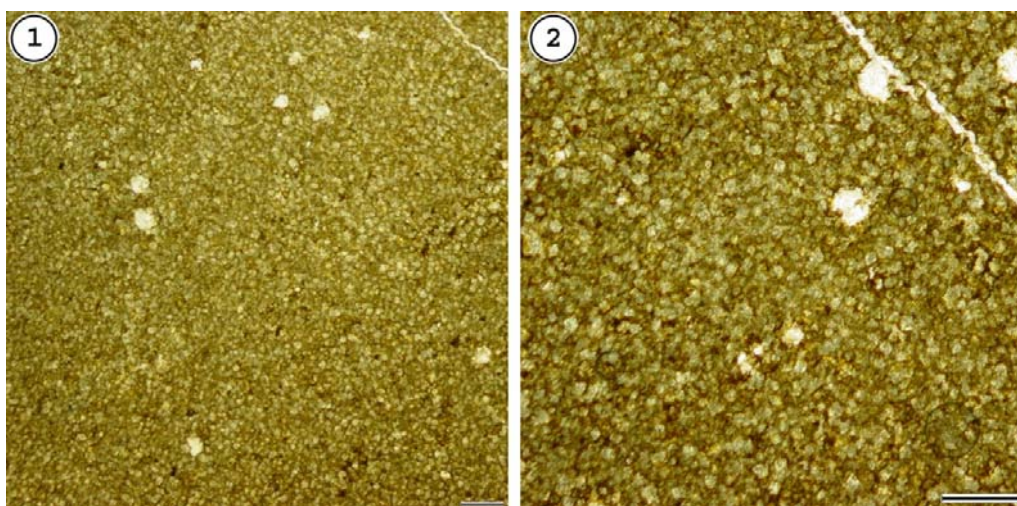


Fig.9: **1 and 2)** Dolomitization processes, observed in thin section (Samples 41 and 42). **Note:** The bar scale is 1mm

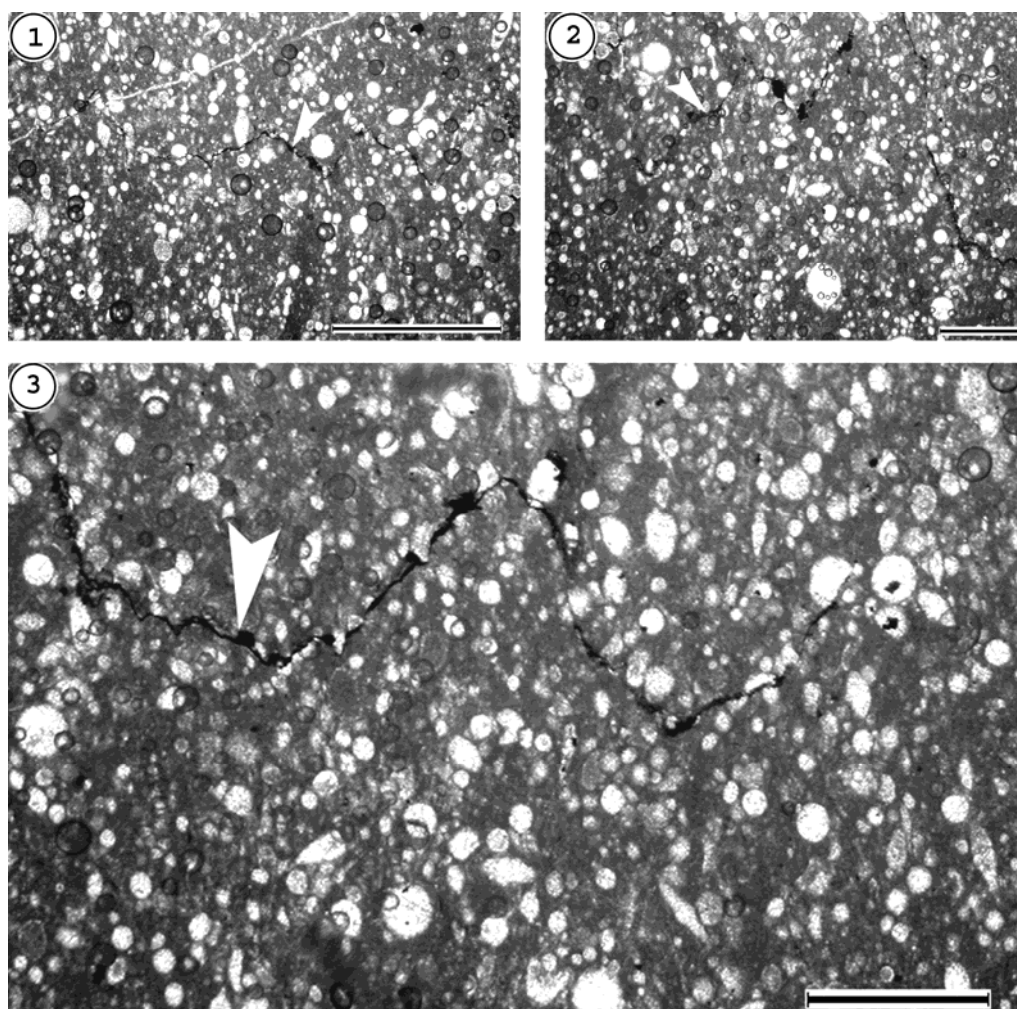


Fig.10: **1)** Sutured stylolite with low amplitude (Sample 84).
2 and 3) Sutured stylolite with high amplitude (Samples 91 and 104)
Note: The bar scale is 1mm

– **Silicification:** In the upper part of the studied section, silicified layers of (5 – 20) cm thickness and layers of limestone with siliceous nodules of (20 – 40) cm thickness appear (Fig.3). The silica responsible for silicification of these layers probably was derived by post-mortem dissolution of siliceous organisms (radiolaria) trapped in the sediment.

– **Cementation:** The cementation is a physical, chemical or biochemical diagenetic process leads to filling of the interstitial spaces due to precipitation from solutions in the empty spaces between the sedimentary particles. The cementation is a post-depositional process that provides the matrix for the pre-existing allochemes. The cement in the studied section consists of calcite and micrite. Two types of calcite cement were identified in thin sections:

1) **Drusy cement** consists of anhedral to subhedral crystals. The crystals grow from the pore walls towards their centers.

2) **Granular cement** consists of anhedral to subhedral, almost equigranular crystals of randomly oriented calcite.

Both types of cements fill some gaps, cracks, and fractures and take place after the sediments burial and lithification. They represent the second generation of the cement. The micritic cement is most commonly found in identified wackestone, packstone and mudstone Microfacies, in the whole studied section and connects allochemes, which consist mostly of radiolaria and partially of planktonic foraminifera.

▪ **Calcareous Nannofossils**

Generally, the diversity of the assemblages is proved to be high, with a total of 35 identified taxa (Fig.11). The assemblages are dominated by the genera *Micrantholithus*, *Nannoconus* and *Rhagodiscus*, whereas other species, such as *Watznaueria barnesae*, *Diazomolithus lehmanii*, *Helenea chiastia*, *Retecapsa surirella*, *R. crenulata*, are common. Less abundant, but characteristic forms include *Assipetra terebrodentarius* and *Haquis circumradiatus*. According to their general composition, these assemblages were clearly Tethyan for the studied interval.

The group of *Rhagodiscus* spp. is indicative of warm surface-water temperatures (Erba, 1987 and Crux, 1989). Other warm water indicator is *Nannoconus* spp., too (Mutterlose, 1991). Bischoff and Mutterlose (1998) observed a good correlation between those two species, in NW Europe site. The microfossil assemblages analysis enabled the identification of the *Micrantholithus hoschulzii* and *Chiastozygus litterarius* Zone, according to the zonation of Sissingh (1977) and Perch-Nilesen (1985).

The lowermost samples in the studied section (up to sample no.10) should be assigned to the *Micrantholithus hoschulzii* Zone (CC6) (Sissingh, 1977 and Perch-Nilesen, 1985), defined as the interval between the last occurrence (LO) of *Calcicalathina oblongata* and the first occurrence (FO) of *Chiastozygus litterarius*. The rest of the section belongs to *Chiastozygus litterarius* Zone, defined as the interval between the FO of *Chiastozygus litterarius* to the FO of *Prediscosphaera cretacea*.

In the lower part of Zone (CC6), *Rhagodiscus gallagherii* was identified (sample no.27); this species appear sporadically in the rest of the section. This interval is also characterized by the presence of large specimens of *Assipetra terebrodentarius*.

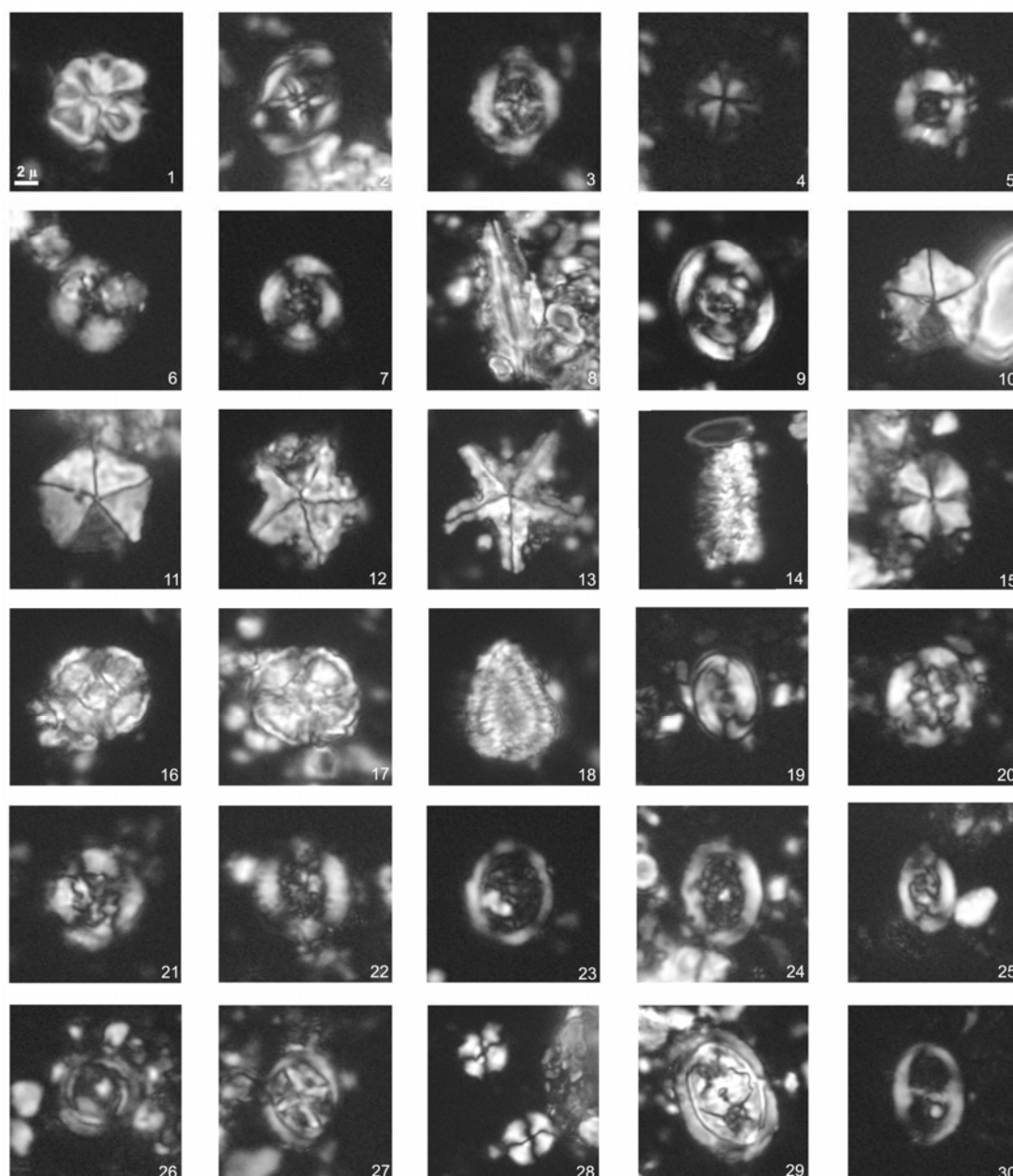


Fig.11: 1) *Assipetra terebrodentarius* (Sample 43); 2) *Chiastozygus litterarius* (Sample 57); 3) *Cretarhabdus striatus* (Sample 105); 4) *Discorhabdus ignotus* (Sample 57); 5) *Diazomatolithus lehmanii* (Sample 55); 6) *Haquis circumradiatus* (Sample 57); 7) *Helenea chiastia* (Sample 43); 8) *Lithraphidites alatus* (Sample 49); 9) *Manivitella pemmatoidea* (Sample 43); 10 and 11) *Micrantolithus hoschulzii* (Samples 47 and 105); 12) *Micrantolithus obtusus* (Sample 105); 13) *Micrantolithus stellatus* (Sample 105); 14) *Nannoconus elongatus* (Sample 47); 15) *Nannoconus ligius* (Sample 51); 16) *Nannoconus quadricanalus* (Sample 49); 17 and 18) *Nannoconus steinmannii* (Samples 49 and 57); 19) *Percivalia fenestrata* (Sample 58); 20) *Retecapsa angustiforata* (Sample 43); 21) *Retecapsa crenulata* (Sample 48); 22) *Retecapsa surirella* (Sample 48); 23) *Rhagodiscus amplus* (Sample 105); 24) *Rhagodiscus asper* (Sample 57); 25) *Rhagodiscus gallagheri* (Sample 58); 26) *Rotelapillus laffittei* (Sample 43); 27) *Staurolithites siesseri* (Sample 48); 28) *Watznaueria barnesae* (Sample 43); 29) *Zeugrhabdotus embergeri* (Sample 43); 30) *Zeugrhabdotus scutula* (Sample 45)

DISCUSSION

The assemblages are largely composed of cosmopolitan and Tethyan species, but we can also point out some striking absences: First, there is a total absence of *Hayesites irregularis*, which first occurs shortly before the FO of *Chiastozygus litterarius*. Second, the total absence of the Boreal species. The FO of *Hayesites irregularis* was proposed by Thierstein (1973) as a nannofossil event coinciding with Barremian – Aptian boundary. Other authors (Applegate and Bergen, 1988; Channel and Erba, 1992, Coccioni *et al.*, 1992) documented the FO of *H. irregularis* in the Uppermost Barremian, below the base of CM0, in the upper part of CM1n magnetostratigraphic zone. The absence of this species and the presence of *Chiastozygus litterarius*, in the studied section ascertain that, the studied sequence is below the Barremian – Aptian boundary. The first occurrence of *Chiastozygus litterarius* has been used by Thierstein (1973 and 1976) and Roth (1983) to define the Barremian – Aptian boundary, but other authors pointed out that *Chiastozygus litterarius* was present even during Upper Barremian (Bralower *et al.*, 1994).

CONCLUSIONS

- Two main facies types were recognized in the studied section, pelagic radiolarian wackestone and pelagic radiolarian packstone. They were overprinted by: **1)** dissolution under pressure, **2)** cementation and **3)** chemical compaction processes in a burial diagenetic environment that resulted during the sediments lithification and consolidation.
- Six diagenetic processes have been recognized and represented by dissolution, calcitization, dolomitization, stylolitization, silicification, and cementation.
- The nannofossil assemblages recorded from the studied section have a marked Tethyan character. The *Micrantolithus hoschulzii* and *Chiastozygus litterarius* Zones have been identified.
- In addition to the biohorizons containing the zonal markers, the FO of *Rhagodiscus gallagherii* has also been identified.
- Due to the outcrop conditions, the upper part of the *Chiastozygus litterarius* Zone is not represented. This fact is indicated by the absence of *Hayesites irregularis* within the uppermost part of the studied section. It is known from other sections that the FO's of these species is recorded near the Barremian – Aptian boundary, immediately above the FO of *Chiastozygus litterarius* Zone.

Appendix: List of calcareous nannofossil species in Balambo Formation

HETEROCOCCOLITS

I. Muroliths

a. Imbricating muroliths (laxoliths)

Family Chiastozygaceae

1. Central area with axial cross

Stauroolithites (Caratini, 1963)

Stauroolithites crux (Deflandre and Fert, 1954 and Caratini, 1963)

Stauroolithites siesseri (Bown, 2000)

2. Central area with transverse bar

Zeugrhabdotus clarus (Bown, 2005)

Zeugrhabdotus embergeri (Noël, 1958 and Perch-Nielsen, 1984)

Zeugrhabdotus scutula (Bergen, 1994 and Rutledge and Bown, 1996)

3. Central area with diagonal cross

Chiastozygus litterarius (Górka, 1957 and Manivit, 1971)

Family Rhagodiscaceae

Percivalia fenestrata (Worsley, 1971 and Wise, 1983)

Rhagodiscus (Reinhardt, 1967)

Rhagodiscus amplus (Bown, 2005)

Rhagodiscus asper (Stradner, 1963 and Reinhardt, 1967)

Rhagodiscus gallagherii (Rutledge and Bown, 1996)

Rhagodiscus robustus (Bown, 2005)

b. Non-imbricating muroliths (protoliths)

Family Stephanolithaceae

Rotelapillus laffittei (Noël, 1956 and 1973)

II. Placoliths

a. Non-imbricating placoliths

Family Biscutaceae

Discorhabdus ignotus (Gorka, 1957 and Perch-Nielsen, 1968)

Family Cretarhabdulaceae

Cretarhabdus striatus (Stradner, 1963 and Black, 1973)

Helenea chiastia (Worsley, 1971)

Helenea quadrata (Worsley, 1971 and Bown and Rutledge, 1998)

Retecapsa angustiforata (Black, 1971)

Retecapsa crenulata (Bramlette and Martini, 1964 and Grün, 1975)

Retecapsa surirella (Deflandre and Fert, 1954 and Grün in Grün and Allemann, 1975)

Family Tubodiscaceae

Manivitella pemmatoidea (Deflandre, 1965 and Thierstein, 1971) emend. Black, 1973)

b. Imbricating placoliths

Family Watznaueriaceae

1. Genera with type rim

Cyclogelosphaera margerelii (Noël, 1965)

Watznaueria barnesae (Black, 1959 and Perch-Nielsen, 1968)

Watznaueria ovata (Bukry, 1969)

2. Genera with modified rim

Diazomatolithus lehmanii (Noël, 1965)

c. Heterococcoliths with uncertain affinities – placoliths

Haqius circumradiatus (Stover, 1966 and Roth, 1978)

NANNOLITHS

Family Braarudospheraceae

Micrantolithus hoschulzii (Reinhardt, 1966 and Thierstein, 1971)

Micrantolithus obtusus (Stradner, 1963)

Micrantolithus stellatus (Aguado, 1997)

Family Microrhabdulaceae

Litrhaphidites alatus (Thierstein, 1972)

Family Nannoconaceae

Nannoconus (Kamptner, 1931)

Nannoconus elongatus (Brönnimann, 1955)

Nannoconus circularis (Deres and Achéritéguy, 1980)
Nannoconus ligius (Applegate and Bergen, 1988)
Nannoconus quadricanal (Bown and Concheyro, 2004)
Nannoconus steinmannii (Brönnimann, 1955)

Family Policlolithaceae

Assipetra terebrodentarius (Applegate *et al.* in Covington and Wise, 1987, and Rutledge and Bergen in Bergen, 1994)

REFERENCES

- Applegate, J.L. and Bergen, J.A., 1988. Cretaceous calcareous nannofossil biostratigraphy of sediments recovered from the Galicia Margin, O.D.P Leg. 103. In: G., Boillot and E.L., Winterer (Eds.), Proceedings of the Ocean Drilling Program, Scientific Results 103, p. 293 – 348.
- Bathurst, R.G.C., 1975. Carbonate Sediments and Their Diagenesis. Elsevier Scientific Publishing Company, Amsterdam, 658pp.
- Bellen, R.C. van Dunnington, H.V., Wetzel, R. and Morton, D., 1959. Lexique Stratigraphic International. Asie, Fasc., 10a, Iraq, Paris, 333pp.
- Bischoff, G. and Mutterlose, J., 1998. Calcareous nannofossils of the Barremian – Aptian boundary interval in NW Europe: Biostratigraphic and paleoecologic implications of a high resolution study. Cretaceous Research, Vol.19, p. 635 – 661.
- Bralower, T.J., Arthur, M.A., Leckie, R.M., Sliter, W.V., Allard, D.J. and Schlanger, S.O., 1994. Timing and paleoceanography of oceanic dysoxia – anoxia in the Late Barremian to Early Aptian (Early Cretaceous). Palaios, Vol. 9, p. 335 – 369.
- Buday, T., 1980. The Regional Geology of Iraq, Vol.1, Stratigraphy and Paleogeography. In: I.I., Kassab and S.Z., Jassim (Eds.). GEOSURV, Baghdad, 445pp.
- Buday, T. and Jassim, S.Z. 1987. The Regional Geology of Iraq, Vol.2, Tectonism, Magmatism and Metamorphism. In: I.I. Kassab and M.J. Abbas (Eds.), Baghdad. 445pp.
- Choquette, P.W. and James, N.P., 1987. Diagenesis, 12, Diagenesis in limestones, 3, The deep burial environment. Geoscience, Canada, Vol.14, p. 3 – 35.
- Chanell, J.E.T. and Erba, E., 1992. Early Cretaceous polarity chrons CM0 to CM11 recorded in northern Italian land sections near Brescia, northern Italy. Earth and Planetary Science Letters, 108, p. 161 – 179.
- Coccioni, R., Erba, E. and Premoli-Silva, I., 1992. Barremian – Aptian calcareous plankton biostratigraphy of the Gorgo Cerbara section (Marche, Central Italy) and implications for plankton evolution. Cretaceous Research, Vol.13, p. 517 – 537.
- Crux, J.A., 1989. Biostratigraphy and palaeogeographical applications of Lower Cretaceous nannofossils from northwestern Europe. In: J.A., Crux and S.E.V., Heck (Eds.), Nannofossils and their applications. Ellis Horwood, Chichester, p. 143 – 211.
- Dunham, R.J., 1962. Classification of carbonate rocks according to depositional texture. In: W.E., Ham, (Ed.), Classification of carbonate rocks. American Association of Petroleum Geologists Memoir, p. 108 – 121.
- Embry, A.F. and Klován, J.E., 1971. A Late Devonian reef tract on Northeastern Banks Island, NWT. Canadian Petroleum Geology Bull., Vol.19, p. 730 – 781.
- Erba, E., 1987. Mid – Cretaceous cyclic pelagic facies from the Umbrian – Marchean Basin: What calcareous nannofossils suggest?. International Nannoplankton Association Newsletter, Vol.9, p. 52 – 53.
- Flügel, E., 2004. Microfacies of Carbonate Rocks. Springer Verlag, Berlin, 976pp.
- Ghafor, I.M., 1993. Planktonic foraminifera ranges in the Balambo Formation (Albian – Turonian) in Sulaimaniya, Azmer region northeastern Iraq. Second Scientific Congress, 24 – 25 April 1993, Special Issue, Arbil, Iraq, p. 30 – 40.
- Hall, P.K., 1957. The geology of Rikan and Zibar. Manuscript report, GEOSURV, Baghdad.
- Jassim, S.Z. and Buday, T., 2006. Late Tithonian – Early Turonian Megasequence AP8. Geology of Iraq. In: S.Z., Jassim and J.C., Goff (Eds.). Dolin, Prague and Moravian Museum, Brno, 341pp.
- Jassim, S.Z. and Goff, J.C., 2006. Geology of Iraq, Dolin Prague and Moravian Museum Brno. 341pp.
- Kent, P.E., Slinger, F.C. and Thomas, A.N., 1951. Stratigraphical exploration surveys in SW Persia. 3rd World Petroleum Congress. Sect. 1.1, The Hague.
- Kiessling, W., 1996. Facies characterization of Mid – Mesozoic deep water sediments by quantitative analysis of siliceous microfaunas. Facies, Vol.35, p. 237 – 274.
- Kling, S.A., 1978. Radiolaria. In: B.U., Haq and A., Boersma, (Eds.). Introduction to Marine Micropaleontology. Elsevier, New York, p. 203 – 244.

- Kuhry, B., Clercq, S.W.G. and Decker, L., 1976. Indications of current actions in Late Jurassic limestones, Radiolarian Limestones, Saccocoma Limestones and associated rocks from the Subbetic, SE Spain. *Sed. Geol.*, Amsterdam, Vol.15, p. 235 – 258.
- Mitsui, S., 1967. Stylolites from the Izu peninsula, Shizuoka Prefecture, Japan. *Sci. Rep. Tohoku Univ.*, 2nd Ser. (Geol.), Vol.39, No.2, p. 149 – 157.
- Mresah, M.H., 1998. The massive dolomitization of platformal and basinal sequences: Proposed models from the Paleocene, Northeast Sirte Basin, Libya. *Sedimentary Geology*, Elsevier, Vol. 116, p. 199 – 226.
- Mutterlose, J., 1991. Das Verteilungs – und Migrations-Muster des kalkigen Nannoplanktons in der Unterkreide (Valanginian – Aptian) NW – Deutschlands. *Palaeontographica*, Abt. B, 221, p. 27 – 152.
- Perch-Nielsen, K., 1985. Mesozoic calcareous nannofossils. In: *Plankton* (H.M., Bolli, *et al.*, Eds.), Stratigraphy. Cambridge University Press, Cambridge, p. 329 – 426.
- Purdy, E.D., 1968. Diagenesis an environmental survey. *Geol. Romana*, Vol.7, Roma, p. 183 – 228.
- Roth, P.H., 1983. Jurassic and Lower Cretaceous calcareous nannofossils in the western North Atlantic (Site 534): Biostratigraphy, preservation, and some observations on biogeography and paleoceanography. *Initial Reports of the Deep Sea Drilling Project 76*. R.E., Sheridan and F.M., Gradstein (Eds.) p. 587 – 621.
- Septfontaine, P.M., 1976. Microfaciès et diagenèse de quelques niveaux jurassiques de Préalpes médianes du Chablais occidental (Haute-Savoie, France). *Eclogae geol. Helv.*, 69/1, Bâle, p. 39 – 61,
- Sibley, D.E. and Gregg, J.M., 1987. Classification of dolomite rock textures. *Jour. Sediment. Petrol.*, Vol.57, p. 967 – 975.
- Simpson, J., 1990. Stylolite controlled layering in an homogeneous limestone: Pseudo bedding produced by burial diagenesis. In: M.E., Tucker, and R.G.C., Bathurst (Eds.), *Carbonate Diagenesis*. Blackwell Scientific Publications, Oxford, p. 293 – 303.
- Sissakian, V.K., 2000. Geological Map of Iraq, Scale 1: 1000 000, 3rd edit. GEOSURV, Baghdad, Iraq.
- Sissingh, W., 1977. Biostratigraphy of Cretaceous calcareous nannoplankton. *Geologie en Mijnbouw*, Vol.56, p. 37 – 65.
- Thierstein, H.R., 1973. Lower Cretaceous calcareous nannoplankton biostratigraphy. *Abhandlungen der Geologischen Bundesanstalt*, 29, p. 1 – 52.
- Thierstein, H.R., 1976. Mesozoic calcareous nannoplankton biostratigraphy of marine sediments. *Marine Micropaleontology*, Vol.1, p. 325 – 362.

About the authors

Dr. Hayam S. Daoud graduated from Babes-Bolyai University (Romania) in 1985 with B.Sc. and M.Sc. in Geology and Geophysical Engineering. In 2006, he got Ph.D. from the same university in facies and diagenesis. In 2006, he joined University of Sulaimaniyah, as Lecturer in College of Engineering, Irrigation Department, and still is lecturing there. He has eight publications in different scientific journals. His major field of interest is carbonate microfacies and microbialitic structures.



Dr. Ramona Balc graduated in 2001 from Babes-Bolyai University, Cluj-Napoca, Romania, with B.Sc. degree in Geology. In 2002 she got M.Sc. degree, and in 2007 the Ph.D. degree from the same university. Since 2002, she joined the Technical High School in Cluj-Napoca, as Geography Teacher. In 2008, she joined Babes-Bolyai University, Faculty of Environmental Sciences, as Lecturer. She has 32 scientific published papers. Her major field of interest is Mesozoic and Cenozoic calcareous nannofossils biostratigraphy, as well Paleocology and Paleobiogeography, based on calcareous nannofossils.

